

Spokane Industries
Spokane Metal Products Div.

SPOKANE METAL PRODUCTS
Spokane Washington

CONFIDENTIAL PROPRIETARY INFORMATION

Reproduction of this data or the manufacturing of products from
this data by anyone other than Spokane Metal Products of Spokane
Washington is strictly prohibited without written consent

1000 GALLON DEFUELER ON TRAILER

TECHNICAL MANUAL

PARTS, OPERATION AND MAINTENANCE

COPYRIGHT 2004 By SPOKANE INDUSTRIES INC.
ALL RIGHTS RESERVED

This document discloses subject matter in which Spokane Metal Products has Proprietary rights and such subject matter shall not, without the written permission of Spokane Metal Products, be either (A) used, released or disclosed in whole or in part outside the government, (B) used in whole or in part by the government for manufacture, or (C) used by a party other than the government, except for (1) emergency repair or overhaul work only, by or for the government, where the item or process concerned is not otherwise reasonably available to enable timely performance of the work, provided that release or disclosure hereof outside the government shall be made subject to a prohibition against further use, release or disclosure, or (2) release to a foreign government, or for emergency repair or overhaul work by or for such government under the conditions of (1) above. This legend shall be marked on any reproduction hereof in whole or in part.

1000 GALLON DEFUELER ON TRAILER

TECHNICAL MANUAL

PARTS, OPERATION AND MAINTENANCE

INDEX

Page

<u>Section 1.</u> Introduction	1
<u>Section 2.</u> Safety	1 & 2
<u>Section 3.</u> Operations	
3.1 Intended Use	3
3.2 Parking Brake	3
3.3 Tires	3
3.4 Before Towing	3
3.5 Start Up	3 & 4
3.6 Vacuum Assembly	4 & 5
3.7 Grounding Reels	5
3.8 Drain Valve	5
3.9 Other Operations	5
<u>Section 4.</u> Maintenance	
4.1 Tank	6
4.2 Tandem Axle Trailer	6
4.3 Parking Brake	6
4.4 Vacuum Generator	6
4.5 Grounding Reels	7
4.6 Vacuum Governor	7
4.7 Other Maintenance	7
<u>Section 5</u> Drawings and sketches	8 thru 11
<u>Section 6.</u> Replacement Parts	12
<u>Section 7.</u> Certs and Warranty	13 thru 20
<u>Section 8</u> Other Manufactures O & M manuals	21
<u>Universal Drain Assembly</u>	End

1.0 INTRODUCTION

- 1.1 To obtain optimum benefit from your equipment, it is recommended that all personnel operating it read and understand this manual prior to operation.**
- 1.2 Upon receipt of the unit, a visual inspection should be made to determine that it is complete and has not sustained any damage during transportation.**

2.0 SAFETY

2.1 Potential Fire Or Explosion

2.1.1 Due to the nature of fuel, care should be exercised to eliminate all sparks and open flame in the area of the unit.

2.1.2 A 50 foot radius area around the unit for no smoking, sparks, or open flames is usually a good practice. It is strongly recommended all local or other regulations be consulted for further restrictions.

2.2 Parking Brake

The parking brake should be activated when unit is in use or unattended.

2.3 Grounding Reel

To eliminate static sparks, the unit is equipped with A grounding reel which should be connected to ground prior to draining or filling

2.4 Towing

Make sure the trailer is securely attached to the towing vehicle. Before moving the unit, check to assure the trailer parking brake is released. Maximum allowable towing speed is 15 MPH.

2.7 Inspections

- 2.7.1 Inspection of tires, undercarriage, tow hitch, valves, hoses, sight gauge, reflectors, lights safety labels, etc., should be inspected on a periodic basis. It is recommended these inspections be performed weekly.**
- 2.7.2 Internal inspection will be necessary to insure structural integrity and cleanliness. It is recommended that interval inspections be performed at least every (6) six months. Caution! When entering confined spaces such as the interior of the tank, care should be taken to provide proper breathing equipment and a separate person dedicated solely to a safety watch of the person inside. It is strongly recommended that all local or other regulations be consulted.**

3.0 OPERATION

3.1 Intended Use

The defueling unit is intended for use in draining and collection of fuel from aircraft and the transportation to a disposal site. Any other use is prohibited and may void any and all warranties.

3.2 Parking Brake

The unit is equipped with a mechanically operated parking brake. The brake should be applied prior to disengaging tow hitch and when filling, or draining tank, or whenever the trailer is left unattended. To activate pull lever handle 180 degrees from the handle mount bracket. To release push the lever handle toward the handle mount bracket.

3.3 Tires

Tire inflation should be checked and maintained as listed on the tire.

3.4 Before Towing

Before towing, check to see the parking brake is disengaged, grounding reel and hoses are disconnected, valves are closed, tow hitch is securely attached to the towing vehicle, and all manways and covers are closed and latched.

3.5 Start up

3.5.0 The unit is equipped with a self contained Viper 70 Air compressor, The compressor should be operated and maintained as per the Viper manual that is included in section 8

3.5.1 Start UP

- 1) **Once the Compressor operation is understood, start by closing the relief/ball valve that comes off the outlet of the compressor**
- 2) **Next close the drain valve item # E and drain ball valve # D,**
- 3) **Close primary and secondary vacuum generator air inlet valves items # A and # B. making sure manway is closed and sealed.**
- 4) **Close Hose reel suction line ball valve # C.**
- 5) **Start the compressor per the viper instruction manual.**
- 6) **Once the compressor is running, open the relief/ball valve that comes off the outlet of the compressor**
- 7) **Open ball valve # A, Notice the Vacuum Generator turns on and creates a vacuum inside of the tank. Note:(The vacuum Governor item # F on top of the tank is factory set to open at 8"hg.)**

3.5.2 1-1/4" x 50' Sump hose

- 1) **To sump with the large 1-1/4" x 50' hose on the hose reel attach the nozzle of your choice to the hose, Then open ball valve # C. The hose is now able to vacuum**
- 2) **Once the tank fills to 92% of its volume the vacuum float shut off gasket closes the suction tank inlet shutting off the suction to the tank.**
- 3) **The Hannay hose reel is spring return loaded so the hose will retract. See Hannay Reels manual that is included in the maintance section.**

3.5.3 SealVacTM standard suction plate

For operation and parts See the Universal Drain Manual section included At the back of this manual.

3.6 Vacuum Assembly

3.6.1 This assembly is equipped with an air powered vacuum generator.

3.6.2 It is intended for vacuum draining or depuddling fuel and condensation. Caution! If other objects such as rock or metallic pieces are vacuumed into the tank, they may create a hazard due to sparks.

3.6.3 Vacuum is started by attaching a recommended air supply of 60CFM at 100 PSI and turning on the air supply valve.

3.6.4 The vacuum generator is equipped with an automatic overflow shut off. When the level of product is full, the float controlled valve shuts off and eliminates the vacuum.
The tank must then be drained in order for vacuuming to continue.

3.6.6 The vacuum assembly is equipped with (1) one each 1/2" NPT opening equipped with a self-closing quick disconnect. To operate, close vacuum suction valve and turn air supply on and connect 1/2" drain probe line.

3.7 Grounding Reels

3.7.1 The bowser unit is supplied with A grounding reel.

3.7.2 Before filling, draining, or vacuuming, the grounding reels must be attached to an appropriate ground.

3.8 Drain Valves

3.8.0 The unit is equipped with a 1-1/2" NPT ball valve with a camlock connector for draining

3.7.1 The emergency valve actuator item # 7 must be engaged in order to drain the tank.

3.9 Other Operations

3.9.0 See the following section (section 8) for manufactures operations on all purchased out components, such as the compressor, hose reel, trailer suspension, etc.

4.0 MAINTENANCE

4.1 Tank

4.1.0 The tank is constructed from ASTM-A-240 T-304 Stainless steel, with a little care it will last for many years. Never use harsh chemicals such as chlorine, bromine, or acids for cleaning the Tank.

4.1.1 The exterior of the tank is coated with an automotive polyurethane finish that has excellent resistance to weather and fuels. This finish should be treated like any automotive finish, cleaned regularly with soap and water, and polished on an as needed basis.

4.2 Tandem Axle Trailer

4.2.0 The tandem axle trailer is constructed to last many years, and with a little care will operate smoothly.

4.2.1 For proper maintenance please refer to the Dexter Axle operation and service manual included within this manual.

4.3 Parking Brake

4.1.1 The trailer unit is equipped with a parking brake assembly consisting of drum brakes with a cable brake actuator
See the Dexter Axle manual included within this manual for more instructions.

4.4 Vacuum Generator

4.4.0 The vacuum generator is equipped with an overflow shut off valve with an Buna-Nitrile seal gasket that will need to be inspected whenever an internal tank inspection is performed. Replace as required.

4.4.1 Both the primary and secondary vacuum generators (see items # 4 and # 5) are equipped with an exhaust silencer which should be cleaned at least every six (6) months or more often depending on the amount of use and conditions.

4.4.2 The vacuum hose should be inspected monthly for cracks. Any sudden loss of vacuum suction power may indicate a crack in the vacuum hose.

4.5 Grounding Reels

4.5.0 Grounding reel cables should be pulled out, cleaned and inspected monthly. Cable clamps and ends should be inspected for loose connections monthly.

4.6 Vacuum Governor

4.6.0 The Vacuum Governor is located inside the tank (see item # 3) It is pre set at the factory to relieve any vacuum inside the tank that exceeds 8"hg. There is a spring loaded Buna-Nitrile seal gasket that will need to be Inspected whenever an internal tank inspection is performed. Replace as required.

4.7 Other Maintenance

4.7.0 See the following section (section 8) for manufactures maintenance on all purchased out components, such as the compressor, hose reel, trailer suspension, etc.

5.0 Drawings And Sketches

This section provides information for identification of items listed in this manual.

Drawing No. SK-914 Sheet 1 of 1 shows the complete unit

Drawing No. SMP-18929 Sheets 1 and 2 Show fabrication tank details

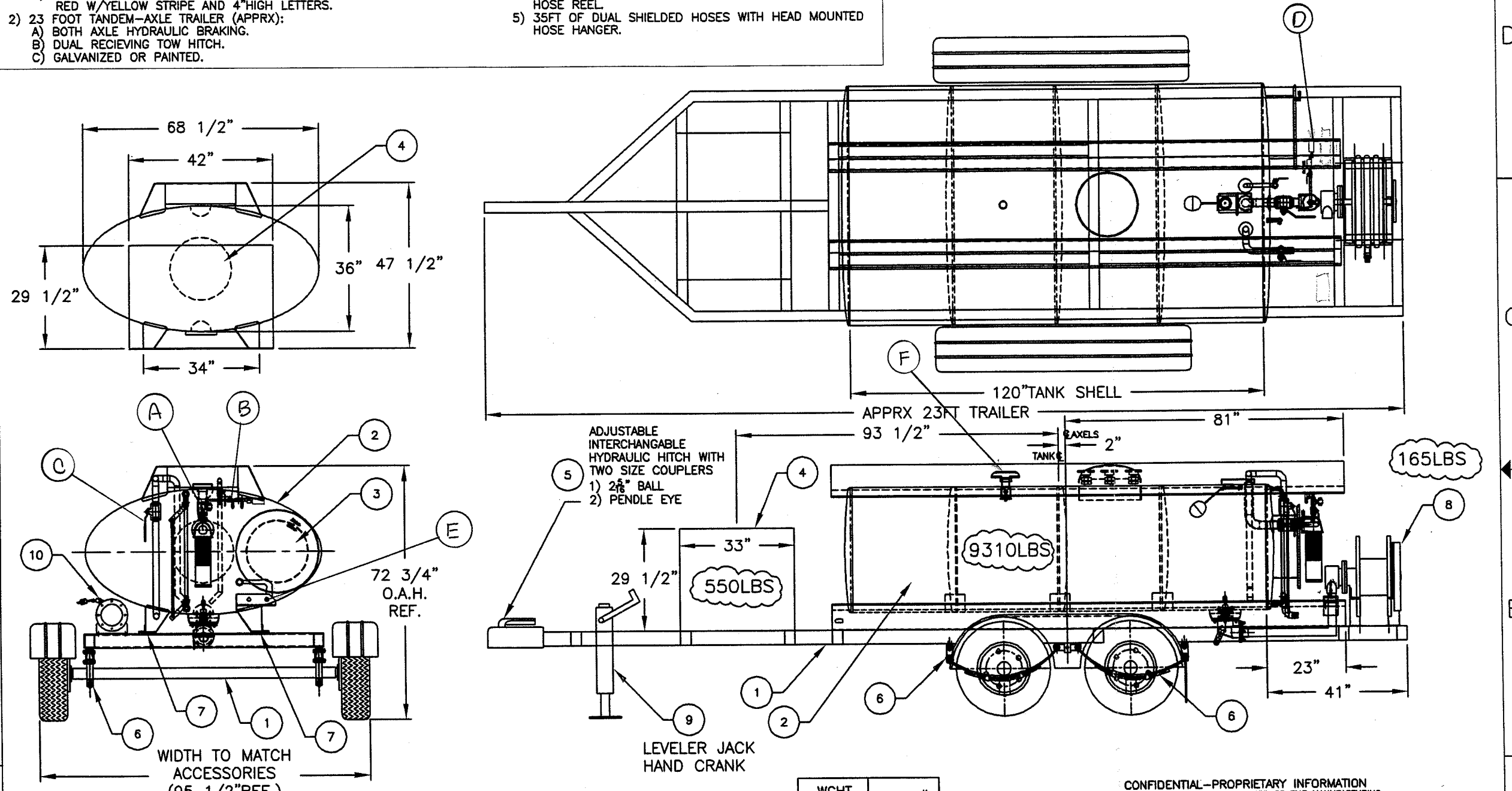
FABRICATE ONE (1) 1000 GALLON REFUELER ASSEMBLY

- 1) 1000 GALLON REFUELER TANK WITH:
 A) 3 INTERIOR BAFFLES.
 B) INTERNAL EMERGENCY VALVE W/REMOTE SHUT-OFF.
 C) 18" DOT 407 MANWAY.
 D) POLYURETHANE PAINT FINISH AND REFLECTOR TAPE RED W/YELLOW STRIPE AND 4" HIGH LETTERS.
 2) 23 FOOT TANDEM-AXLE TRAILER (APPRX):
 A) BOTH AXLE HYDRAULIC BRAKING.
 B) DUAL RECIEVING TOW HITCH.
 C) GALVANIZED OR PAINTED.

- 3) LOCKABLE PUMP BOX WITH:
 A) AIR OPERATIONAL PUMP.
 B) POLYURETHANE PAINT FINISH AND REFLECTOR TAPE RED W/YELLOW STRIPE AND 4" HIGH LETTERS.
 4) 50 FEET OF 1 1/4" HOSE WITH SPRING WOUND HOSE REEL.
 5) 35FT OF DUAL SHIELDED HOSES WITH HEAD MOUNTED HOSE HANGER.

DRAWING/REVISION APPROVALS

SYMB.	DESCRIPTION	DWN. BY/DATE	ENG. MGR./DATE	Q.C. MGR./DATE
	ORIGINAL ISSUE	MDD/ 11-21-03		
A	MODIFIED PER REVIEW	MDD/ 12-16-03		
B	MODIFIED FOR FABRICATION NEEDS	MDD/ 2-11-04	KO/ 02-11-04	KO/ 02-11-04



ITEM	QTY.	M.O.D.	SPEC. No.	DESCRIPTION	MAT'L	WGHT.
10	1	2.5		STATIC REEL,100AMP AND 100FT CABLE,ML-2930-15	C/S	16#
9	1	2.3		TRAILER JACK	C/S	8#
8	1	2.5		1 1/4"-50FT AIRCRAFT HOSE REEL ASSEMBLY	-	60#
7	8	-		TANK MOUNTING PAD	RUB.	1#
6	4	2.3		LEAF SPRING	C/S	22#
5	1	2.3		DUAL RECIEVING TOW HITCH ASSEMBLY	C/S	26#
4	1	2.5		VANAIR VIPER ENGINE DRIVEN AIR COMPRESSOR	C/S	550#
3	1	-		DUAL SHIELDED SUCTION CUP HOSE ASSEMBLY	-	35#
2	1	-		1000 GALLON S/S JIFFY REFUELER	S/S	1800#
1	1	2.3		23FT TANDEM AXLE TRAILER ASSEMBLY (APPRX)	C/S	1300#
					WGHT ESTIMATED	3818#

CONFIDENTIAL-PROPRIETARY INFORMATION
 REPRODUCTION OF THESE DRAWINGS OR THE MANUFACTURING
 OF PRODUCTS FROM THESE DRAWINGS FOR USE BY ANYONE
 OTHER THAN SPOKANE METAL PRODUCTS OF SPOKANE, WA
 IS STRICTLY PROHIBITED WITHOUT WRITTEN CONSENT.

SI SPOKANE INDUSTRIES
 Metal Products Division
 P.O.Box 3303, Spokane, WA 99220 (509) 928 0720

WORK ORDER
 W/O: 18929
 SALES ORDER
 S/O: 9429
 TOLS. EXCEPT AS NOTED
 FRACT.= 1/8"
 .XX = ± .13"
 .XXX = ± .005"
 ANG. = ± 1°

TITLE:
DUAL AXLE TRAILER ASSEMBLY
 1000 GALLON REFUELER TANK
 WITH 23FT TANDEM TRAILER ASSEMBLY (APPRX)

SIZE: A | DWG. No.: SK-914 | SCALE: N.T.S. | SHT 1 OF 1

6.0 REPLACEMENT PARTS

This section provides information for identification of parts for ordering. To order, it is important to have the Model Number, Subassembly Number, Part Number and Description. Parts may be ordered by calling or writing to:

SPOKANE METAL PRODUCTS

P.O. Box 3303

Spokane, WA 99220-3303

Telephone: (509)921-8867

Tele Fax:(509)927-0826

7.0 Warranty and Certificates

**This section provides information for identification of items listed in this manual
Including Warranty and other manufactures certificates.**

SPOKANE METAL PRODUCTS

Spokane Washington

1000 GALLON defuler on tandem axle trailer

ONE YEAR LIMITED WARRANTY

Seller warrants its 1000 Gallon Fuel Drain Tank to be free from defects in material and workmanship under the normal use and service for which the unit is intended if, but only if the unit has been properly operated, maintained and stored in accordance with printed directions contained in the product manual. Our obligation under this Warranty shall be limited to the repair or exchange of equipment and parts which may prove defective within one year of the date the unit is put into service but shall in no event extend beyond a date three years from the date the unit is shipped from our plant. All transportation charges on parts returned to us for replacement under this warranty must be returned pre-paid.

This warranty does not extend to damage caused be environmental factors varying from normal design conditions, whether natural or man-made, or to units subjected to misuse, negligence or accident. This warranty likewise does not extend to the unit or any parts thereof which have been repaired or altered improperly or in any way so as to effect adversely its stability or reliability. This warranty does not cover parts or labor required to repair or replace parts whose usefulness is exhausted due to normal operation of the unit.

THIS WARRANTY IS EXPRESSLY IN LIEU OF ALL OTHER WARRANTIES, EXPRESS OR IMPLIED, INCLUDING ANY IMPLIED WARRANTY OF MERCHANTABILITY OR FITNESS FOR A PARTICULAR PURPOSE NOT SET FORTH IN A WRITING SIGNED BY AN AUTHORIZED REPRESENTATIVE OR SELLER. SELLER SHALL IN NO EVENT BE LIABLE FOR ANY CONSEQUENTIAL LOSS OR DAMAGE RESULTING FROM THE USE OR LOSS OF USE OF THE UNIT.

SPOKANE HOUSE OF HOSE, INC.

Aircraft Refueling Hose TEST CERTIFICATION

This AIRCRAFT REFUELING hose meets API Bulletin 1529 - 5th edition, and 1998 and N.F.P.A. Bulletin 407

CUSTOMER:	<u>Spokane Metal Prod. / Spokane</u>
ASSEMBLY SERIAL NO.	<u>HH-031104 / #55184</u>
HOSE SPECIFICATION:	<u>Dayco Gold Label</u>
HOSE I.D.	<u>1 1/4"</u>
WORKING PRESSURE:	<u>300 psi</u>
TEST PRESSURE:	<u>600 psi</u>
TYPE OF COUPLING:	<u>H521-2 x H522-2 w/125A b/e</u>
MEGA OHM READING (M.R.)	<u>.010</u> R <small>(MEGA OHMS)</small>
ASSEMBLY LENGTH:	<u>9"</u> L
COVER RESISTANCE	<u>.003644</u> (R/L) x 3.28 <small>(MEGA OHMS/METER)</small>
ASSEMBLED DATE:	<u>3/11/04</u>
DATE OF TEST:	<u>3/11/04</u>

THIS HOSE ASSEMBLY WAS HYDROSTATICALLY TESTED TO 200% OF RECOMMENDED WORKING PRESSURE FOR 10 MINUTES AFTER COUPLINGS WERE ATTACHED.

SPOKANE HOUSE OF HOSE COUPLER

SPOKANE HOUSE OF HOSE, E.5520 SPRAGUE, SPOKANE, WA 99212

PH# 1-800-541-6351, LOCAL 535-3638, FAX# 1-800-541-4673

SPOKANE HOUSE OF HOSE, INC.

Aircraft Refueling Hose TEST CERTIFICATION

This AIRCRAFT REFUELING hose meets API Bulletin 1529 - 5th edition, and 1998 and N.F.P.A. Bulletin 407

CUSTOMER:	<u>Spokane Metal Prod. / Spokane</u>
ASSEMBLY SERIAL NO.	<u>HH-031004 / #55004</u>
HOSE SPECIFICATION:	<u>Goodyear Wingcraft</u>
HOSE I.D.	<u>1 1/4"</u>
WORKING PRESSURE:	<u>300 psi</u>
TEST PRESSURE:	<u>600 psi</u>
TYPE OF COUPLING:	<u>H522-2 w/125C b/e</u>
MEGA OHM READING (M.R.)	<u>.005</u> R <small>(MEGA OHMS)</small>
ASSEMBLY LENGTH:	<u>50'</u> L
COVER RESISTANCE	<u>.000328</u> (R/L) x 3.28 <small>(MEGA OHMS/METER)</small>
ASSEMBLED DATE:	<u>3/10/04</u>
DATE OF TEST:	<u>3/10/04</u>

THIS HOSE ASSEMBLY WAS HYDROSTATICALLY TESTED TO 200% OF RECOMMENDED WORKING PRESSURE FOR 10 MINUTES AFTER COUPLINGS WERE ATTACHED.

SPOKANE HOUSE OF HOSE COUPLER

SPOKANE HOUSE OF HOSE, E.5520 SPRAGUE, SPOKANE, WA 99212

PH# 1-800-541-6351, LOCAL 535-3638, FAX# 1-800-541-4673

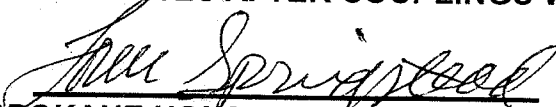
SPOKANE HOUSE OF HOSE, INC.

Aircraft Refueling Hose TEST CERTIFICATION

This AIRCRAFT REFUELING hose meets API Bulletin 1529 - 5th edition, and 1998 and N.F.P.A. Bulletin 407

CUSTOMER:	<u>Spokane Metal Prod. / Spokane</u>
ASSEMBLY SERIAL NO.	<u>HH-030404 / #53182</u>
HOSE SPECIFICATION:	<u>GOODYEAR WINGCRAFT</u>
HOSE I.D.	<u>1 1/2"</u>
WORKING PRESSURE:	<u>300 psi</u>
TEST PRESSURE:	<u>600 psi</u>
TYPE OF COUPLING:	<u>Scovill H523-1 x H523-2 w/15C</u>
MEGA OHM READING (M.R.)	<u>.020</u> R <small>(MEGA OHMS)</small>
ASSEMBLY LENGTH:	<u>32"</u> L
COVER RESISTANCE	<u>.02400</u> (R/L) x 3.28 <small>(MEGA OHMS/METER)</small>
ASSEMBLED DATE:	<u>3/4/04</u>
DATE OF TEST:	<u>3/4/04</u>

THIS HOSE ASSEMBLY WAS HYDROSTATICALLY TESTED TO 200% OF RECOMMENDED WORKING PRESSURE FOR 10 MINUTES AFTER COUPLINGS WERE ATTACHED.


SPOKANE HOUSE OF HOSE COUPLER

SPOKANE HOUSE OF HOSE, E.5520 SPRAGUE, SPOKANE, WA 99212

PH# 1-800-541-6351, LOCAL 535-3638, FAX# 1-800-541-4673

SPOKANE HOUSE OF HOSE, INC.

Aircraft Refueling Hose TEST CERTIFICATION

This AIRCRAFT REFUELING hose meets API Bulletin 1529 - 5th edition, and 1998 and N.F.P.A. Bulletin 407

CUSTOMER:	<u>Spokane Metal Prod. / Spokane</u>
ASSEMBLY SERIAL NO.	<u>HH-030904 / #54452</u>
HOSE SPECIFICATION:	<u>Dayco Gold Label</u>
HOSE I.D.	<u>1 1/4"</u>
WORKING PRESSURE:	<u>300 psi</u>
TEST PRESSURE:	<u>600 psi</u>
TYPE OF COUPLING:	<u>Scovill H522-1 x H522-2 w/125A</u>
MEGA OHM READING (M.R.)	<u>.020</u> R <small>(MEGA OHMS)</small>
ASSEMBLY LENGTH:	<u>26"</u> L
COVER RESISTANCE	<u>.03280</u> (R/L) x 3.28 <small>(MEGA OHMS/METER)</small>
ASSEMBLED DATE:	<u>3/9/04</u>
DATE OF TEST:	<u>3/9/04</u>

THIS HOSE ASSEMBLY WAS HYDROSTATICALLY TESTED TO 200% OF RECOMMENDED WORKING PRESSURE FOR 10 MINUTES AFTER COUPLINGS WERE ATTACHED.

SPOKANE HOUSE OF HOSE COUPLER

SPOKANE HOUSE OF HOSE, E.5520 SPRAGUE, SPOKANE, WA 99212

PH# 1-800-541-6351, LOCAL 535-3638, FAX# 1-800-541-4673

MANUFACTURER'S

CERTIFICATE OF ORIGIN

Comes now the undersigned manufacturer and certifies the sale of the following described vehicle, this 17th day of Feb.

2004 on Invoice No. 9231

to Spokane Industries Inc./Spokane Metal Prod. Div. (Distributor, Dealer, Etc.)

whose address is N. 3808 Sullivan Rd. #4 SIP (Street, City and State) Spokane, WA 99216

Trade Name TRAC PAC Year 04 Series or Model BT18

No. Axles 2 Length 18 Ft.

No. Wheels 4 Serial No. 196S182064ATP0489

Shipping Weight 1500# Mfg. License (WA) No. 6133

Said manufacturer hereby certifies that this written instrument constitutes the first conveyance of said vehicle after its manufacture and that the manufacturer's serial number set forth above has not been and will not be used by the manufacturer on any other vehicle manufactured by said manufacturer, and that there are no other manufacturer's certificates issued by the manufacturer for the vehicle described above.

IN WITNESS WHEREOF the manufacturer of the above described vehicle has hereunto set his hand and certifies that the statements contained in the foregoing manufacturer's certificate are true.

METALITE INDUSTRIES, INC.

1805 W. 4th Ave. Spokane, WA 99224 Phone: (509) 624-4333

Any Change or Erasure On This Certificate Will Make It Void

By: [Signature] Title [Title]

Name of Applicant for Title

Address

FIRST ASSIGNMENT FOR VALUE RECEIVED, the undersigned hereby transfers this Statement of Origin and the motor vehicle described therein to

Address: [Blank] and certifies that the vehicle is new and has not been registered in this or any other state; he also warrants the title of said motor vehicle at time of delivery, subject to the liens and encumbrances, if any, as set out below:

Amt. of Lien Date To Whom Due Address

Dated [Blank] at [Blank] By: [Blank] Sign Here Position

Transferor (Firm Name) Dealer License (Permit) No. Before me personally appeared [Blank] who by me being duly sworn upon oath says that the statements set forth above are true and correct. Subscribed and sworn to before me this [Blank] day of [Blank]

Notary Seal Notary Public for [Blank] County, State of [Blank]

SECOND ASSIGNMENT

FOR VALUE RECEIVED, the undersigned hereby transfers this Statement of Origin and the motor vehicle described therein to

Address: [Blank] and certifies that the vehicle is new and has not been registered in this or any other state; he also warrants the title of said motor vehicle at time of delivery, subject to the liens and encumbrances, if any, as set out below:

Amt. of Lien Date To Whom Due Address

Dated [Blank] at [Blank] By: [Blank] Sign Here Position

Transferor (Firm Name) Dealer License (Permit) No. Before me personally appeared [Blank] who by me being duly sworn upon oath says that the statements set forth above are true and correct. Subscribed and sworn to before me this [Blank] day of [Blank]

Notary Seal Notary Public for [Blank] County, State of [Blank]

THIRD ASSIGNMENT

FOR VALUE RECEIVED, the undersigned hereby transfers this Statement of Origin and the motor vehicle described therein to

Address: [Blank] and certifies that the vehicle is new and has not been registered in this or any other state; he also warrants the title of said motor vehicle at time of delivery, subject to the liens and encumbrances, if any, as set out below:

Amt. of Lien Date To Whom Due Address

Dated [Blank] at [Blank] By: [Blank] Sign Here Position

Transferor (Firm Name) Dealer License (Permit) No. Before me personally appeared [Blank] who by me being duly sworn upon oath says that the statements set forth above are true and correct. Subscribed and sworn to before me this [Blank] day of [Blank]

Notary Seal Notary Public for [Blank] County, State of [Blank]

**MANUFACTURED BY:
METALITE INDUSTRIES, INC.
SPOKANE, WASHINGTON**

MFD. DATE: Feb. 2004

GVWR 5520 **KG** (12168 **LB**)

GAWR ALL 5520 **KG** (12168 **LB**)

TIRES LT235/85R16E

RIMS 16"

COLD PRES: 550 **KPA** (80 **PSI**) **SINGLE**

**THIS VEHICLE CONFORMS TO ALL APPLICABLE US
FEDERAL MOTOR SAFETY STANDARDS IN EFFECT
ON THE DATE OF MANUFACTURE SHOWN ABOVE**

VIN: 196S182064ATP0489

TYPE: TRAILER

MODEL: BT18

MAX LOAD CAPACITY: 10,663^{kg}

8.0 Other Manufactures O & M Manuals

This section provides information on any other manufactures products used.

8.0 Other Manufactures O & M Manuals

This section provides information on any other manufactures products used.