

SPOKANE INDUSTRIES, INC.
Spokane Metal Products Division
Spokane, Washington

CONFIDENTIAL PROPRIETARY INFORMATION

Reproduction of this data or the manufacturing of products from
This data by anyone other than Spokane Industries, Inc. of Spokane,
Washington is strictly prohibited without written consent.

400 GALLON FUEL BOWSER
TECHNICAL MANUAL
PARTS, OPERATION AND MAINTENANCE
MODEL NUMBER BOW 400-05

© COPYRIGHT 2000 BY SPOKANE INDUSTRIES INC.
ALL RIGHTS RESERVED

This document discloses subject matter in which Spokane Industries, Inc. has Proprietary rights and such subject matter shall not, without the written permission of Spokane Industries, Inc. be either (A) used, released or disclosed in whole or in part outside the government, (B) used in whole or in part by the government, for manufacture, or (C) used by a party other than the government, except for (1) emergency repair or overhaul work only, by or for the government, where the item or process concerned is not otherwise reasonably available to enable timely performance of the work, provided that release of disclosure hereof outside the government shall be made subject to a prohibition against further use, release of disclosure, or (2) release to a foreign government, or for emergency repair or overhaul work by or for such government under the conditions of (1) above. This legend shall be marked on any reproduction hereof in whole or in part.

400 GALLON FUEL BOWSER
TECHNICAL MANUAL
PARTS, OPERATION AND MAINTENANCE
MODEL NUMBER BOW 400-05

INDEX

	<u>PAGE</u>
<u>Section 1</u> Introduction	1
1.3 Leading Particulars	1
<u>Section 2</u> Safety	2
<u>Section 3</u> Operation	
3.1 Intended Use	4
3.2 Parking Brake	4
3.3 Towing and Under Carriage	4
3.4 Telescoping Drain Assembly	5
3.5 Vacuum Assembly	6
3.6 Grounding Reels	7
3.7 Drain Valve	7
3.8 Sample Port	7
3.10 Vent Overflow Preventor	7
3.11 Remote Drain Funnel	7
<u>Section 4</u> Maintenance	
4.1 Parking Brake	8
4.2 Undercarriage and Tow Bar	9
4.3 Telescoping Drain Assembly	9
4.4 Vacuum Assembly	10
4.5 Grounding Reels	11
4.8 Vent Overflow Preventor	11
4.10 Trouble Shooting	12

<u>Section 5</u>	Replacement Parts	13
5.1	Main Tank	16
5.2	Under Carriage	
	Axle, Front	17
	Axle, Rear	19
	Brake, Parking	20
	Wheel Assembly, Front	24
	Wheel Assembly, Back	26
5.3	Manway Assembly	28
5.4	Decal Package	29
5.5	Telescoping Drain	31
5.6	Vacuum Assembly	33
5.7	Miscellaneous Fixtures	35
5.8	Vent, Overflow Preventor	37
5.9	Remote Drain Funnel	38
5.10	Warranty	40

1.0 INTRODUCTION

1.1 To obtain optimum benefit from your fuel bowser unit, it is recommended that all personnel operating it read and understand this manual prior to operation.

1.2 Upon receipt of the Bowser unit, a visual inspection should be made to determine that it is complete and has not sustained any damage during transportation.

1.3 Leading Particulars

Table 1.3

Volume	440 Gallons
Length (Tow bar extended)	176 Inches
(Tow bar raised)	116 Inches
Width	75 Inches
Height	55 Inches
Weight Empty	1160 LBS.
Environmental conditions	
Operating temperature range	-40 F to +125 F
Vacuum pump capability (suction inlet blocked)	16 in. Hg.
Flow (no restriction)	120 scfm
Compressed air required	60cfm at 100psi
Vacuum chamber capacity	25 gallons
Vacuum hose	
Length	50 feet
Inside diameter	1-1/4" Inches
Telescoping funnel	
Maximum height	16 Feet
Minimum height	55 Inches
Remote drain funnel	
Maximum height	49 Inches
Minimum height	20 Inches
Tire size	
Inflation pressure	20.5x8.00-10
Maximum towing speed (forward only)	15 mph
Note: Do not back bowser using tow vehicle	

2.0 SAFETY

General Precautions

The following are general safety precautions that are not necessarily related to a specific procedure and therefore may not appear elsewhere in this manual. These are general safety precautions and instructions that personnel must understand and apply during many phases of operation and maintenance to ensure personal safety and health and the protection of Air Force property

2.1 Potential Fire Or Explosion

2.1.1 Due to the nature of fuel, care should be exercised to eliminate all sparks and open flame in the area of the fuel bowser.

2.1.2 A 50 foot radius area around the fuel bowser for no smoking, sparks, or open flames is usually a good practice. It is strongly recommended all local or other regulations such as Military T.O 00-25-172 be consulted for further restrictions.

2.1.3 Bowser should be drained prior to performing any maintenance to the tank.

2.2 Telescoping Drain

2.2.1 Care should be exercised in using the telescope to prevent injury to fingers, by pinching them between clamps and dropping sections.

2.2.2 If high wind conditions exist, do not extend telescoping funnel.

2.3 Grounding

2.3.1 To eliminate static sparks, the bowser unit is equipped with two grounding reels which should be connected prior to draining or filling operations.

2.4 Towing

2.4.1 Make sure the tow bar is securely attached to the towing vehicle.

2.4.2 Before moving the bowser unit, check to assure the parking brake is released.

2.4.3 Maximum allowable towing speed is 15 MPH.

2.5 Parking

2.5.1 Parking brake must be applied when filling and draining or when left unattended.

2.6 Inspections

2.6.1 Inspection of tires, undercarriage, tow bar, vent, valves, hoses, sump strainer, sight gauge, reflectors, safety labels, etc., should be carried out in accordance with local maintenance policies and or applicable Air Force directives.

2.6.2 Internal inspection will be necessary to insure structural integrity and cleanliness.

2.6.3 Confined space/crawlspace

Personnel that work within a confined space that by design has limited openings for entry and exit, has unfavorable natural ventilation, not intended primarily for human occupancy, or contains other recognized safety hazards shall comply with the requirements of AFOSH Std 127-25 "Confined spaces". An AF form 1024, "Confined spaces entry permit" will be processed with the local safety, health, and fire prevention offices prior to entering the space.

2.6.4 Personnel Protective Equipment (PPE)

If unique local conditions make compliance with the protective clothing or other occupational health requirements specified in this manual unnecessary or impractical, obtain an evaluation of the operation from the bioenvironmental engineer. The environmental engineer and the base safety officer will determine the required precautions.

2.7 Other safety

2.7.1 Finger rings/jewelry

Finger rings have caused many serious injuries. Remove rings, watches and other metallic objects which may cause shock or burn hazards. Unless specifically allowed by shop safety procedures, remove finger rings during all maintenance activity.

- 2.7.2 Cleaners/chemicals/paints/primers
Some cleaners, chemicals, paints and primers have adverse effects on skin, eyes, and the respiratory tract. Observe manufacturer's warning labels. Material Safety Data Sheets (MSDS) instructions for proper handling, storage, and disposal, and current safety directives. Use only in authorized areas. Unless otherwise indicates in the text, use as described in this manual should not result in any immediate health concerns. Consult the local bioenvironmental engineer and base safety officer for specific protection equipment and ventilation requirements.
- 2.7.3 Do not service or adjust alone
Do not attempt internal service or adjustment of equipment unless another person capable of rendering air and resuscitation is present.
- 2.7.4 Lifting/handling
Use adequate number of personnel or appropriately rated lifting and handling devices to move equipment.

3.0 OPERATION

- 3.1 Intended Use
 - 3.1.1 The fuel bowser unit is intended for use in draining and collection of fuel from aircraft and the transportation to a disposal site. Any other use is prohibited and may void any and all warranties.
- 3.2 Parking Brake
 - 3.2.1 The bowser unit is equipped with a mechanically operated parking brake. The brake should be applied prior to disengaging tow bar. The brake should be applied when filling, or draining tank, or whenever the unit is left unattended.
- 3.3 Towing
 - 3.3.1 The bowser unit is equipped with steerable front wheels controlled by the tow bar.

3.3.2 Caution

Do not back bowser using a tow vehicle because it can jackknife causing damage to towbar and or undercarriage.

3.3.3 Tire inflation should be checked and maintained as described in the maintenance section.

3.3.4 Before towing, check to see the brake is disengaged, grounding reel and hoses are disconnected, valves are closed, tow bar is securely attached to the towing vehicle, telescoping drain is collapsed, and all manways and covers are closed and latched.

3.3.5 The bowser unit is equipped with a tow bar latch to hold it in the upright position.

3.4 Telescoping Drain Assembly (See section 5.5)

3.4.1 Intended use

The fuel bowser is equipped with a telescoping drain assembly, which is used to drain fuel from low point fuel ports. Funnel is equipped with a nitrile rubber seal (#2) around the top edge to allow placement against the underside of a wing.

3.4.2 To Raise:

- (1) Open protective cover (See section 5.3)
- (2) Loosen top clamp if necessary. (See section-5.5 item #7)
- (3) Grasp top section (#1) with one hand and lift until the top clamp (#3) raises approximately six inches.
- (4) Tighten clamp securely with the other hand.
- (5) Reposition lifting hand by grasping tube below tightened clamp and lift until next clamp is raised approximately 6 inches.
- (6) Repeat steps 1-4 until desired height is obtained or assembly is fully extended.

3.4.3 To Lower:

- (1) Tightly grasp bottom extended tube(#13) with one hand and loosen the securing clamp(#23).
- (2) Slowly lower tube, hand over hand, until the following clamp is resting on the loosed clamp.
- (3) Repeat steps 1 and 2 until all sections are lowered

3.4.4 When not in use, telescope should be collapsed and the protective cover closed to eliminate contamination

3.5 Vacuum Assembly (See section 5.6)

3.5.1 This assembly is equipped with an air powered vacuum generator (#14 thru 21)

3.5.2 It is intended for vacuum draining or depuddling fuel and condensation. Caution! If other objects such as rock or metallic pieces are vacuumed into the vacuum chamber, they may create a hazard due to sparks.

3.5.3 Vacuum is started by attaching a air hose (recommended air supply of 60CFM at 100 PSI) to the quick disconnect (#38) and turning on the air supply valve.(#19) Position vacuum hose (#30) for depuddeling operation and open valve (#26)

3.5.4 The vacuum chamber is equipped with an automatic drain valve (#12) that opens whenever vacuum is eliminated in the chamber. This valve opens directly into the main tank.

3.5.5 The vacuum generator is equipped with an automatic overflow protector (#36) When the level of product is full, the overflow protector shuts off and eliminates the vacuum. The vacuum chamber will then automatically drain. The air supply valve (#19) must be shut off to reset the overflow protector Vacuuming may then continue.

- 3.5.6 The vacuum assembly is supplied with 50 feet of vacuum hose (#30) and a ball valve (#26) on the vacuum suction.
- 3.6 Grounding Reels (See section 5.7)
 - 3.6.1 The bowser unit is supplied with two grounding reels.
 - 3.6.2 Before filling, draining, or vacuuming, the grounding reels must be attached to the aircraft or object being serviced and an appropriate ground.
- 3.7 Drain Valves (See section 5.7)
 - 3.7.1 The bowser unit is equipped with a 1-1/2" NPT ball valve (#15) with a camlock connector (#16).
- 3.8 Sample Port (See section 5.7)
 - 3.8.1 The bowser unit is equipped with a 1/2" NPT valve for use as a sample port (#7).
- 3.10 Vent Overflow Preventor (See section 5.8)
 - 3.10.1 The bowser unit is equipped with a float #1) actuated seal (#2) to prevent fuel from flowing out the vent in the event the bowser is overfilled.
- 3.11 Remote drain funnel (See section 5.9)
 - 3.11.1 The bowser unit is equipped with a remote drain funnel that is intended to be used to collect fuel from low point fuel ports that are too low to use the standard telescoping drain.

3.11.2 To Raise:

- (1) Open protective cover(#11)
- (2) Loosen top clamp if necessary(#9)
- (3) Grasp top section(#7) with one hand and lift until the top clamp(#9) raises approximately six inches.
- (4) Reposition lifting hand by grasping tube section below the tightened clamp and lift until the next clamp is raised approximately six inches.
- (5) Repeat steps 1-4 until desired height is obtained or assembly is fully extended.

3.11.3 To Lower:

- (1) Tightly grasp bottom extended tube(#6) with one hand and loosen the securing clamp(#9).
- (2) Slowly lower tube(#6), hand over hand, until the following clamp is resting on the loosed clamp.
- (3) Repeat steps 1 and 2 until all sections are lowered.

3.11.4 When not in use, telescope should be collapsed and the cover closed to eliminate contamination

4.0 MAINTENANCE

4.1 Parking Brake (see section 5.2.3)

4.1.1 The bowser unit is equipped with a parking brake assembly consisting of a 7" diameter brake drum with 1 - 3/4" wide brake shoes.

4.1.2 The shoes are activated via a mechanical linkage, eccentric and lever.

4.1.3 Adjustment may be necessary as the shoes wear.

- (1) Tightening is accomplished by removing the bolt through one yoke and screwing yoke in to shorten connecting rod.
- (2) Do not over tighten or brakes may drag when released.

- 4.1.4 Replacement of shoes.
- (1) Remove wheel.
 - (2) Remove nut retaining hub and drum assembly.
 - (3) Disconnect actuating rod.
 - (4) Remove shoe retainers.
 - (5) Install new shoes.
 - (6) Replace shoe retainers.
 - (7) Adjust actuator rod length.
 - (8) Replace wheel.

4.2 Under Carriage and Tow Bar (see section 5.2.1)

4.2.1 The bowser unit is equipped with steerable front wheels, fixed rear wheels, and a tow bar.

4.2.2 Maintenance should consist of the following:
Note:(King pin bushing, turning bushings and tie rod ends are self lubricating and need no additional maintenance).
Inspect entire unit in accordance with
35-1-226 WC-1

4.2.3 If excessive front tire wear or poor steering response is noticed, the front end probably needs a alignment.
The proper tow setting is 1/8" in toward the front of the unit.

4.3 Telescoping Drain Assembly (see section 5.5)

4.3.1 The telescoping Drain Assembly consists of stainless steel housing 4 1/2" in diameter permanently attached to the tank and five aluminum tube sections.

4.3.2 The stainless tube and four largest aluminum tubes are equipped with a clamp assembly.

4.3.4 Each aluminum tube is crimped on the lower end which acts as a stop to prevent the tube from sliding through the clamp.

4.3.5 Disassembling of the telescope assembly is accomplished by rotating the four sections 180 degrees from normal position and gently lifting each section so that the crimped edge on the tube is aligned with the slot on the clamp.

4.4 Vacuum Assembly (see section 5.6)

4.4.1 The vacuum assembly consists of a vacuum chamber with an air powered vacuum generator mounted on a removable cover. The cover is held in place by three latches.

4.4.2 The vacuum chamber is equipped with an automatic drain valve (12) located at the bottom of the vacuum chamber underneath. This valve is preset at the factory and should not need further adjustment, however the gasket (2) may be replaced if needed.

4.4.2.1 Gasket replacement:

Removal:

- 1) Drain bowser.
- 2) Remove bolt (3) and nut (6) by reaching down thru the manway.
- 3) Remove drain valve (12) from tank.
- 4) Replace gasket as needed.
- 5) Reinstall in the reverse of the above steps.

4.4.3 The vacuum cover is equipped with an overflow valve (36) which should require no maintenance. However the gasket (8) may be replaced if needed

4.4.3.1 Gasket replacement:

Removal:

- 1) Drain bowser.
- 2) Release the three latches holding vacuum cover down.
- 3) Remove vacuum cover off the bowser.
- 4) Replace gasket as needed.
- 5) Reinstall in the reverse of the above steps.

4.4.4 The vacuum generator is attached to the chamber cover. It is equipped with an exhaust silencer (14) which should be cleaned at six (6) month intervals or more often depending on the amount of use and conditions. Clean silencer in mild soap and water solution and let air dry prior to reinstallation.

- 4.4.5 The vacuum hose (30) should be replaced if any sudden loss of vacuum suction occurs and/or any cracks, leaks are visible.
- 4.4.6 The cover gasket (13) should be replaced if deterioration has occurred, by removing cover (32) replacing gasket and reinstalling cover.
- 4.5 Grounding Reels
- 4.5.1 Grounding reels should be maintained in accordance to 35-1-266WC-1 and local procedures.
- 4.8 Vent Overflow Preventor (See section 5.8)
- 4.8.1 The vent overflow preventor is located inside the tank directly under the vent, and has a replaceable float and gasket.
- 4.8.2 Removal:
- (1) Drain bowser
 - (2) Reach inside of manway and locate vent overflow directly under the exterior of the vent.
 - (3) Compress cage (5) until it disengages from mounting tabs and remove tank.
 - (4) Remove float and gasket and replace as needed.
 - (5) Reinstall in the reverse order of the above steps.

4.10 TROUBLE SHOOTING

<u>SYMPTOM</u>	<u>PROBABLE CAUSE</u>	<u>PROBABLE CORRECTIONS</u>
Bowser does not track or steer correctly or steers loosely	Bent King Pin housing see section 5.2.1	Replace King Pin housing
	Item #6	
	Defective Tie Rod End see section 5.2.1	Replace Tie Rod End
	Item #12	
Toe Bar does not stay in the upright position	Loose or worn out Bushings, see section 5.2.1	Replace as needed
	Items #11,16 or 18	
	Alignment incorrect See section 4.2.3	Adjust as needed
Parking Brake does not work	Broken or stretched spring see section 5.2.1 Item # 26	Replace as needed
	Need adjustment	Adjust as per instructions in section 4.1.3
Vacuum System will not depuddle	Needs repairing see section 5.2.3	Replace as needed
	Defective lower drain stop gasket, see section 4.4.2.1 Item #2	Replace as needed
	Not enough air pressure to operate vacuum generator, see section 3.5.3	Increase air pressure and volume
	Plugged outlet Filter see section 4.4.4	Replace or clean as required
	Defective lid gasket See section 4.4.6	
Fuel misting is occurring through vacuum generator	Suction hose leaking See section 4.4.5	
	Bowser tank is too full	Empty main Bowser tank
	Overflow stop gasket needs replacing See section 4.4.3	Repeice or adjust as needed

<u>SYMPTOM</u>	<u>PROBABLE CAUSE</u>	<u>PROBABLE CORRECTIONS</u>
Telescoping Drain won,t stay up	Loose clamp handles	Retighten handles
Telescoping Drain is over flowing	Bowser tank is full	Empty main Bowser tank
Fuel will not drain	Cloged screen Cloged overflow vent	Remove and clean as required

5.0 REPLACEMENT PARTS

This section provides information for identification of parts for ordering. To order, it is important to have the Model Number, Subassembly Number, Part Number and Description. Parts may be ordered by calling or writing to:

SPOKANE METAL PRODUCTS
P.O. Box 3303
Spokane, WA 99220-3303
Telephone: (509)928-0720
Tele Fax:(509)927-0826

MANUFACTURE DIRECTORY

COAST IND.
15959 PLUMA AVE.
CERRITOS, CA. 90701
FSCM 1N109

SCHRADER AUTOMOTIVE INC.
566 MAINSTREAM DRIVE
P.O. BOX 675
NASHVILLE, TENNESSEE 37202-0675
FSCM 27783

ALINABAL
28 WOODMONT ROAD
MILFORD, CONNECTICUT 06460
FSCM 31633

LINCOLN, A PENTAIR CO.
ONE LINCOLN WAY
ST. LOUIS, MO 63120
FSCM 36251

PT COUPLING COMPANY INC.
P.O. BOX 3909
ENID, OK. 73702-3909
FSCM 33813

McMASTER CARR
P.O. BOX 54960
LOS ANGELES, CA 90054
FSCM 3A054

CARDINAL INDUSTRIAL PRODUCTS
3873 W. OQUENDO
LOS VEGAS, NV. 89118
FSCM 57454

APOLLO BALL VALVE DIVISION
CONBRACO INDUSTRIES, INC.
P.O. BOX 125
PAGELAND, SC 29728
FSCM 57661

AMETEK
U.S. GAUGE DIVISION/
HUNTER SPRING PRODUCTS
SELLERSVILLE, PA 18960
FSCM 61349

SPOKANE METAL PRODUCTS
P.O. BOX 3303
BLD. 4 SPOKANE INDUSTRIAL PARK
SPOKANE, WA 99220
FSCM 66144

BUNTING BEARINGS CORP.
1001 HOLLAND PARK BLVD
P.O. DRAWER 729
HOLLAND, OH 43528J
FSCM 71366

CHICAGO HD
9100 PARK AVE.
FRANKLIN PARK, IL. 60131
FSCM 71747

DIXON VALVE AND COUPLING CO.
800 HIGH ST.
CHESTERTOWN, MD. 21620
FSCM 76621

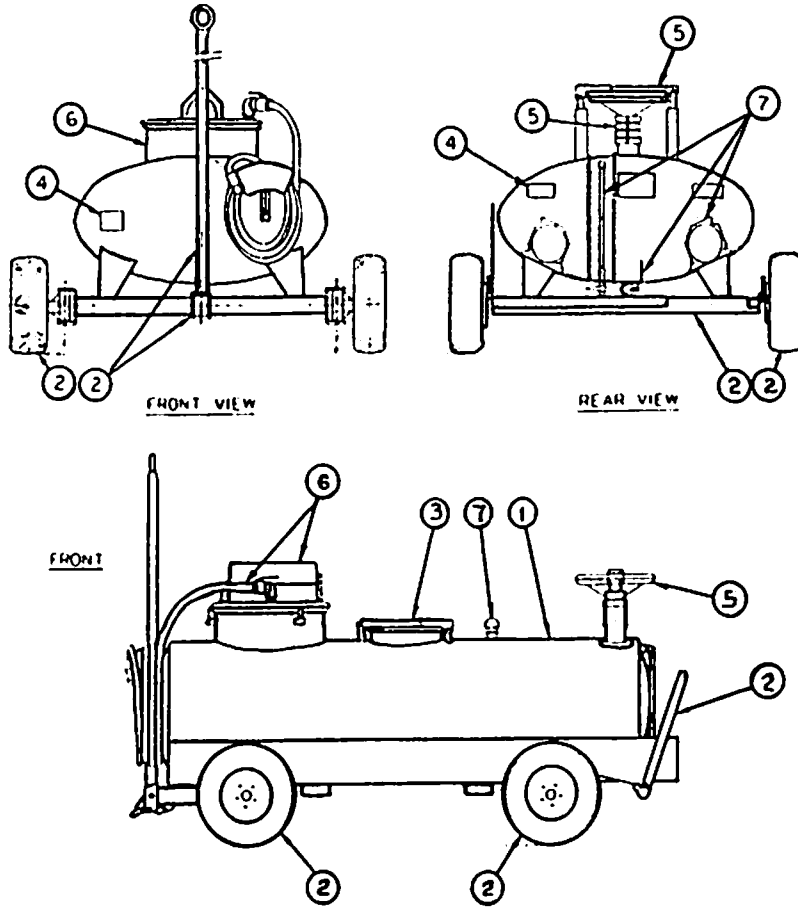
A F C
COSGROVE INDUSTRIAL PARK
BRANFORD, CT. 06405
FSCM 7R846

MAC LEAN'FOGG CO.
P.O. BOX 91396
CHICAGO, IL. 60693
FSCM 82465

KNAPPCO
9304 MATTOX RD.
KANSAS CITY, MISSOURI 64150
FSCM 91840

COOPER INDUSTRIES
COOPER HAND TOOL DIVISION
1000 LULKIN RD.
P.O. BOX 728
APEX, NC. 27502-0728
FSCM 96508

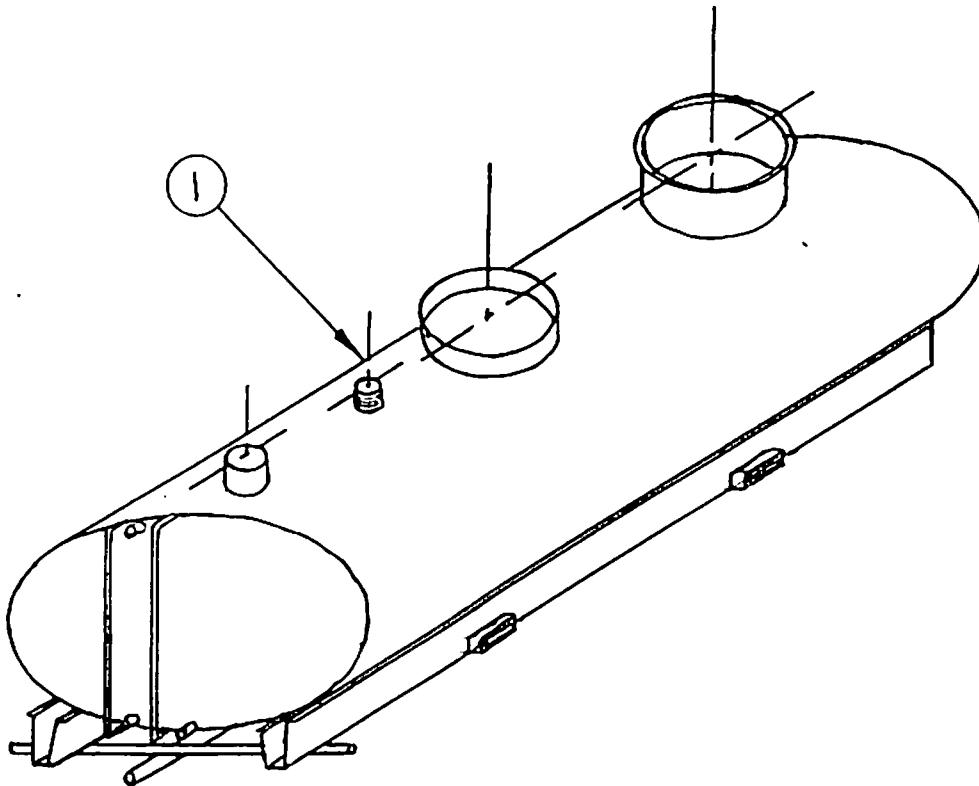
BINDER METAL
P.O. BOX 2306
GARDENA, CA. 90248
FSCM DBJ40



<u>Item No.</u>		<u>Section</u>
1	Main Tank	5.1
2	Axle, Front	5.2.1
2	Axle, Rear	5.2.2
2	Brake, Parking	5.2.3
2	Wheel Assembly, Front	5.2.4
2	Wheel Assembly, Rear	5.2.5
3	Manway Assembly	5.3
4	Decal Package	5.4
5	Telescoping Drain	5.5
6	Vacuum Assembly	5.6
7	Miscellaneous Fixtures	5.7
7	Vent, Overflow Preventor	5.8

CONFIDENTIAL PROPRIETARY INFORMATION
 Reproduction of this data or the manufacturing of products from
 this data by anyone other than Spokane Metal Products of
 Spokane, WA is strictly prohibited without written consent.

SECTION 5.1



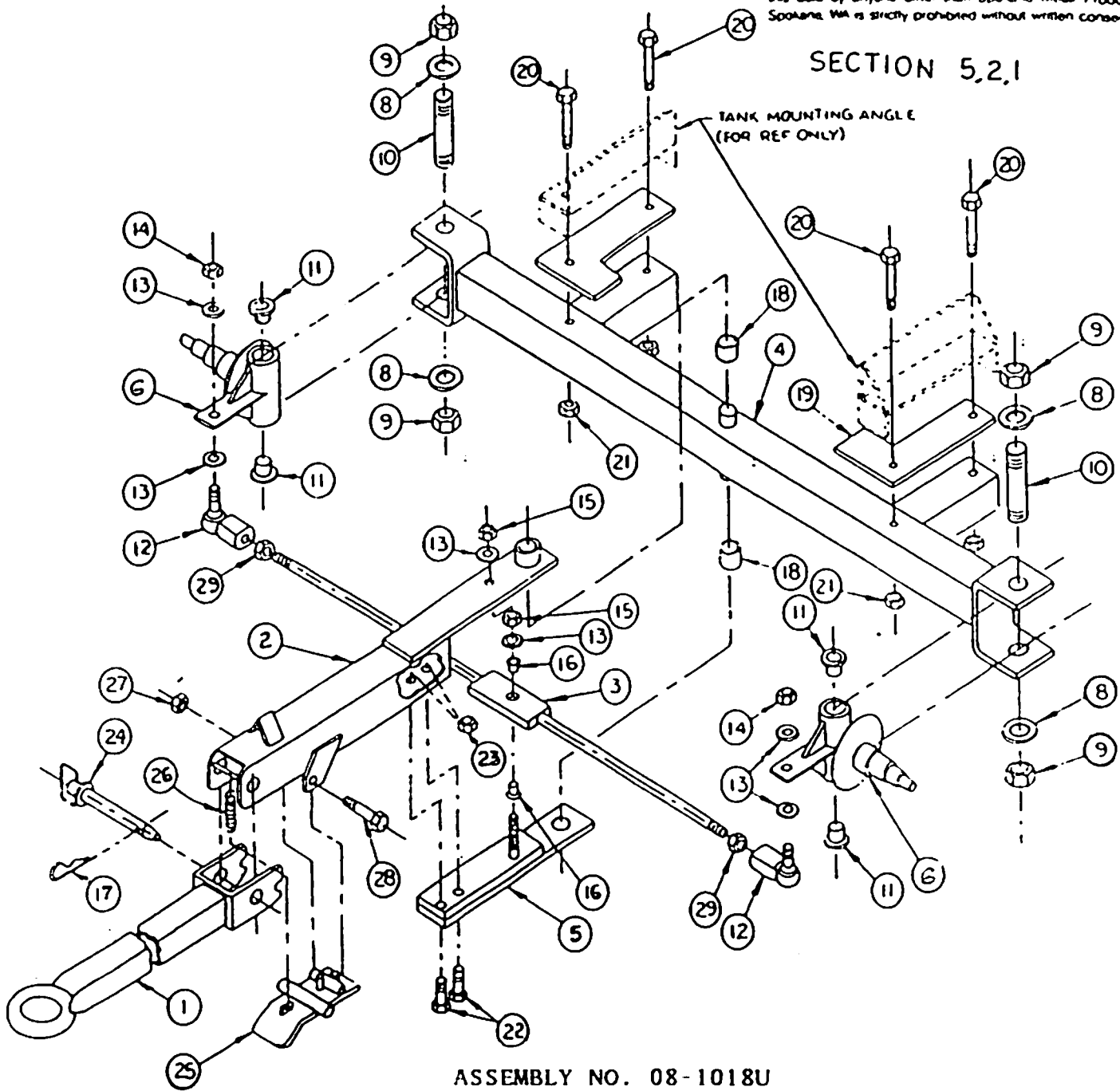
ASSEMBLY NO. 08-11109

MAJOR ASSEMBLY - TANK WELDMENT

Item No.	Part No.	Cage code	Description	Qty per Assy	Usable on code	SMR code
1	08-11109	66144	Tank weldment	1		XB

This data by anyone other than Spokane Metal Products of Spokane, WA is strictly prohibited without written consent

SECTION 5.2.1



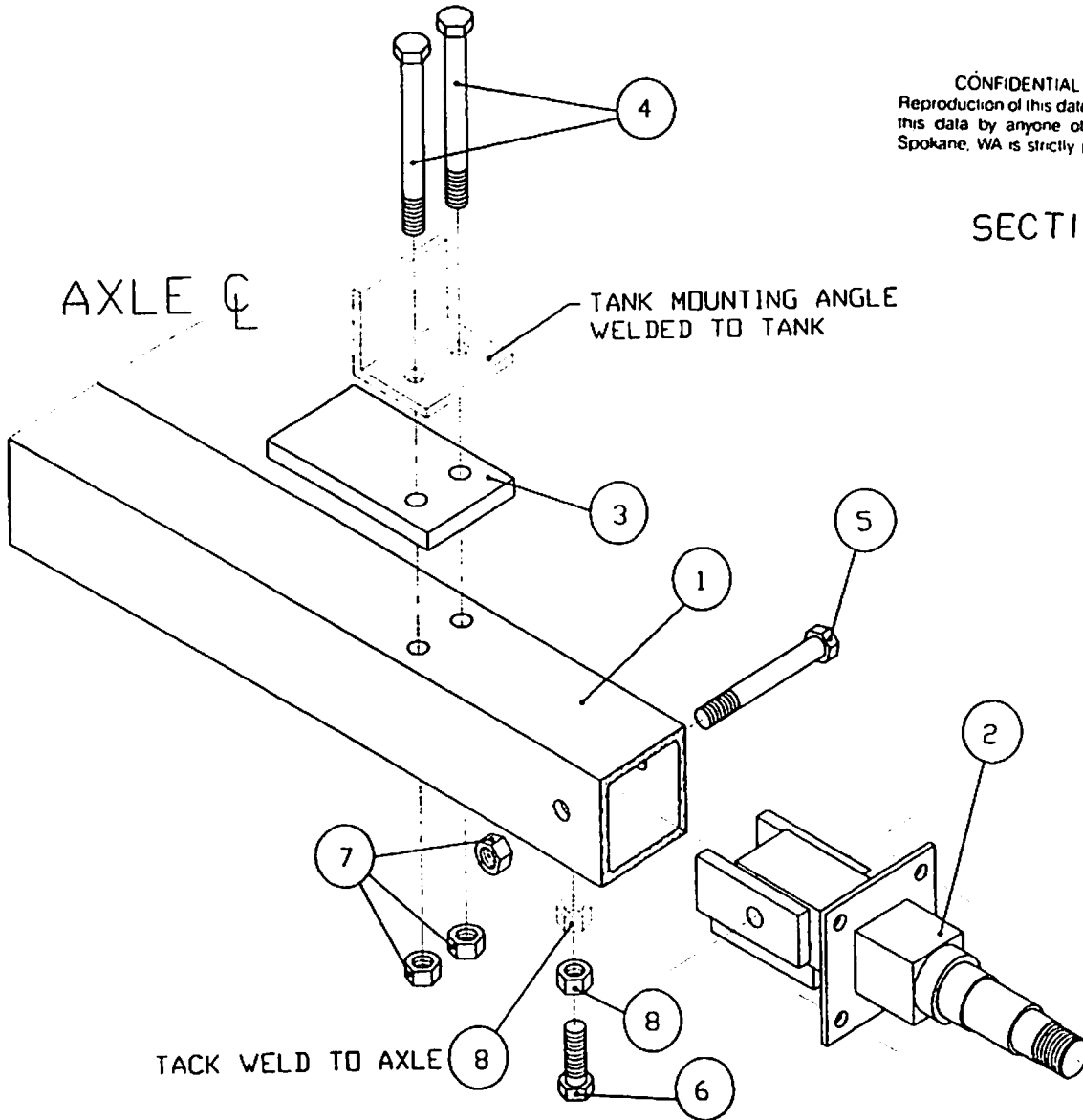
ASSEMBLY NO. 08-1018U

MAJOR ASSEMBLY - AXLE ASSEMBLY

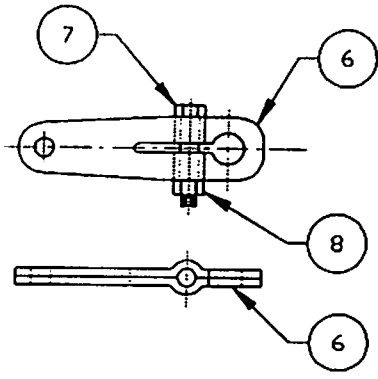
Item No.	Part No.	Cage code	Description 1234	Qty per Assy	Usable on code	SMR code
0	08-1018U	66144	.Undercarriage,front	1		XB
1	07-1103	66144	..Bar,Tow	1		PAFZZN
2	07-1104	66144	..Arm,Steering	1		XB
3	07-1005	66144	..Rod,Tie	1		PAFZZN
4	07-1107	66144	..Axle,Front	1		PAFZZN
5	07-1016	66144	..Plate, Lower	1		XB
6	07-1009	66144	..Housing,King Pin	2		XB
7						
8	MS27183-31	96906	...Washer, Flat	4		PAFZZN
9	MS51922-86	96906	...Nut, Self Locking	4		PAFZZN
10	05-1010	66144	...Pin, King	2		XB
11	FFB242812	71366	...Flange Bearing	4		PAFZZN
12	VF-12-G	31633	...Ball Joint	2		PAFZZN
13	3/4Flat,ZP	0BJ40	...Washer, Flat, 3/4	5		PAFZZN
14	MS51943-46	96906	...Nut, 3/4 UNF,lock	3		PAFZZN
15						
16	FF101102	71366	...Flange Bearing	2		PAFZZN
17	3/16Cotter	57454	...Pin, Cotter,3/16ZP	1		PAFZZN
18	AA1704-15	70417	...Bearing, Sleeve	2		PAFZZN
19	06-1023	66144	...Pad,Mounting,Front	2		PAFZZN
20	1/2UNCx5	57454	...Bolt,1/2x5,ZP,CS	4		PAFZZN
21	1/2UNC,NUT	57454	...Nut,1/2UNC,Nylock	4		PAFZZN
22	1/2UNCx1.75	57454	...Bolt,1/2x1.75ZP,CS	2		PAFZZN
23	1/2UNC,NUT	57454	...Nut,1/2UNC,Nylock	2		PAFZZN
24	1x4.5,ZP	57454	...Pin,Hitch,1x4.5,ZP	1		PAFZZN
25	07-1020	66144	..Latch,Tow	1		XB
26	9628K5	3A054	...Spring,Helical,Ext	1		PAFZZN
27	5/16UNC,NUT	82465	...Nut,5/16UNC,Nylock	1		PAFZZN
28	5/16UNCx4.5	57454	...Bolt,5/16UNCx4.5,ZP	1		PAFZZN
29	MS51922-61	96906	...Nut,selflocking,Hex	2		PAFZZN

CONFIDENTIAL PROPRIETARY INFORMATION
 Reproduction of this data or the manufacturing of products from
 this data by anyone other than Spokane Metal Products of
 Spokane, WA is strictly prohibited without written consent

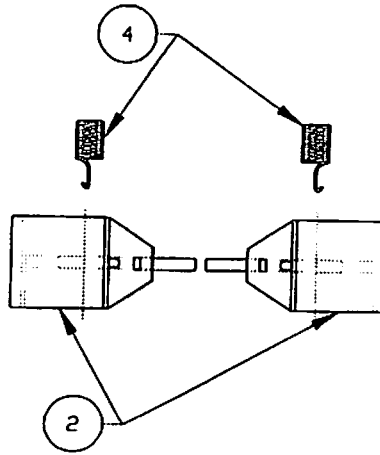
SECTION 5.2.2



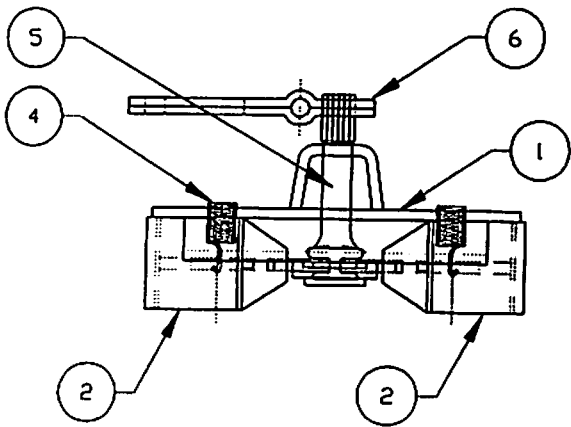
ITEM NO.	PART NO.	CAGE CODE	DESCRIPTION	QTY. PER ASSY.	USEABLE ON CODE	SMR CODE
0	08-1010U	66144	.UNDERCARRIAGE ,REAR	1		XB
1	05-1023U	66144	..AXLE ,REAR	1		XB
2	07-1010	66144	..SPINDLE ,REAR	2		XB
3	06-1012	66144	...PAD,MOUNTING,REAR	2		PAFZZN
4	1/2"UNCX5,C/S	57454	...BOLT,1/2-UNCX5	4		PAFZZN
5	1/2-UNCX4.C/S	57454	...BOLT,1/2-UNCX4	2		PAFZZN
6	1/2"-UNCX1-1/2	57454	...SCREW	2		PAFZZN
7	MS51943-39	96906	...NUT,SELF LOCKING,HE	6		PAFZZN
8	1/2-UNC,ASTMA3082465		...NUT,1/2-UNC	4		PAFZZN



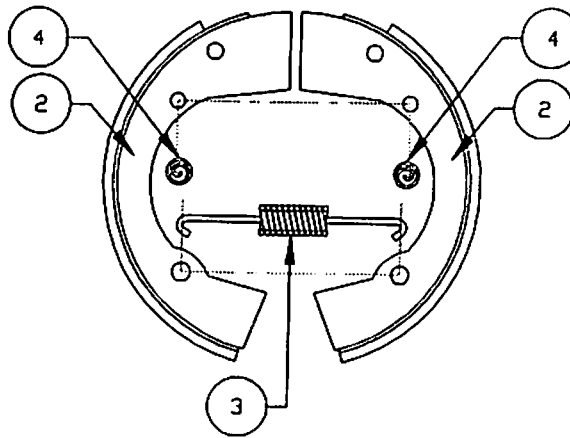
CAM LEVER OPERATOR DETAIL



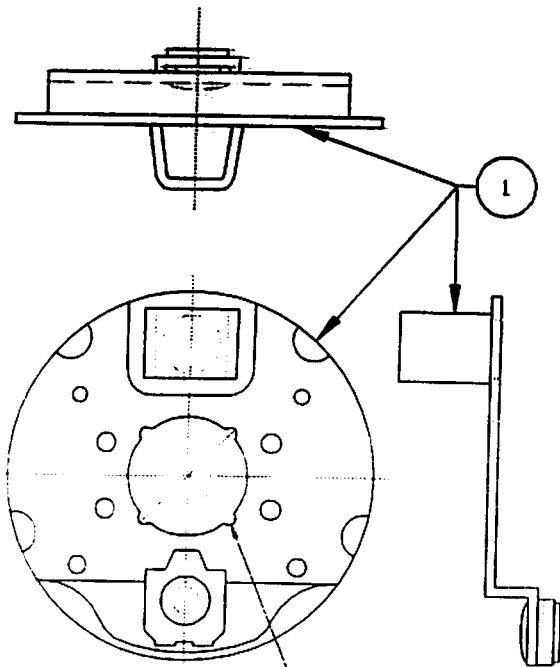
BRAKE SHOE / HOLD DOWN SPRING DETAIL



BRAKE/CAM/LEVER/BACKING PLATE ASSY

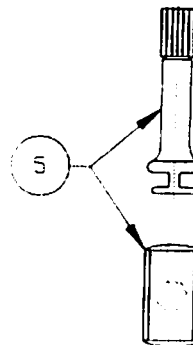


BRAKE SHOE / SPRING ORIENTATION
RETURN SPRING



$R\frac{1}{4}$ REF
NOTCH TO
MATCH SPINDLE

BACKING PLATE DETAIL



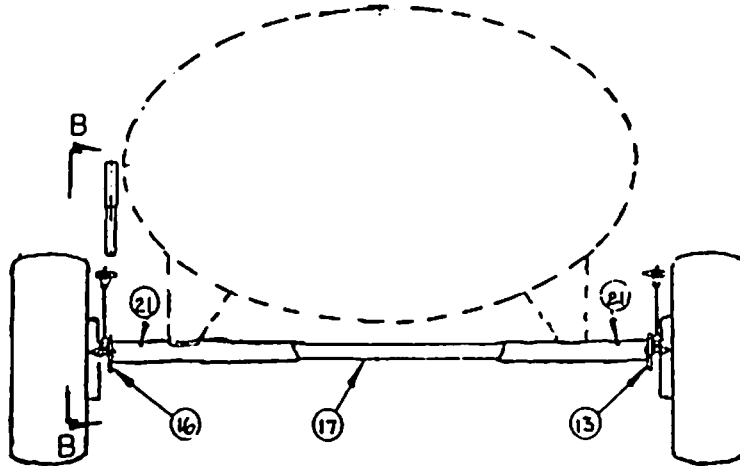
CAM DETAIL

SECTION 5.2.3
 CONFIDENTIAL-PROPRIETARY INFORMATION
 REPRODUCTION OF THESE DRAWINGS OR THE MANUFACTURING OF PRODUCTS FROM THESE
 DRAWINGS FOR USE BY ANYONE OTHER THAN SPOKANE INDUSTRIES INC. OF SPOKANE, WA
 IS STRICTLY PROHIBITED WITHOUT WRITTEN CONSENT

ITEM NO.	PART NO.	CAGE CODE	DESCRIPTION	QTY PER ASSY	USEABLE ON CODE	SMR CODE
0	08-1007R	66144	BRAKE, ASSY	2		XB
1	04-1064R	66144	PLATE, BACK	2		XB
2	04-1065R	66144	SHOE, ASSY	2	PR	PAFZZN
3	04-1065R	66144	RETURN SPRING	1		PAFZZN
4	04-1026R	66144	HOLD DOWN SPRING	2		PAFZZN
5	04-1028R	66144	CAM	1		PAFZZN
6	04-1030R	66144	CAM LEVER	1		PAFZZN
7	02-10017R	66144	CAM BOLT	1		PAFZZN
8	02-12012R	66144	CAM NUT	1		PAFZZN

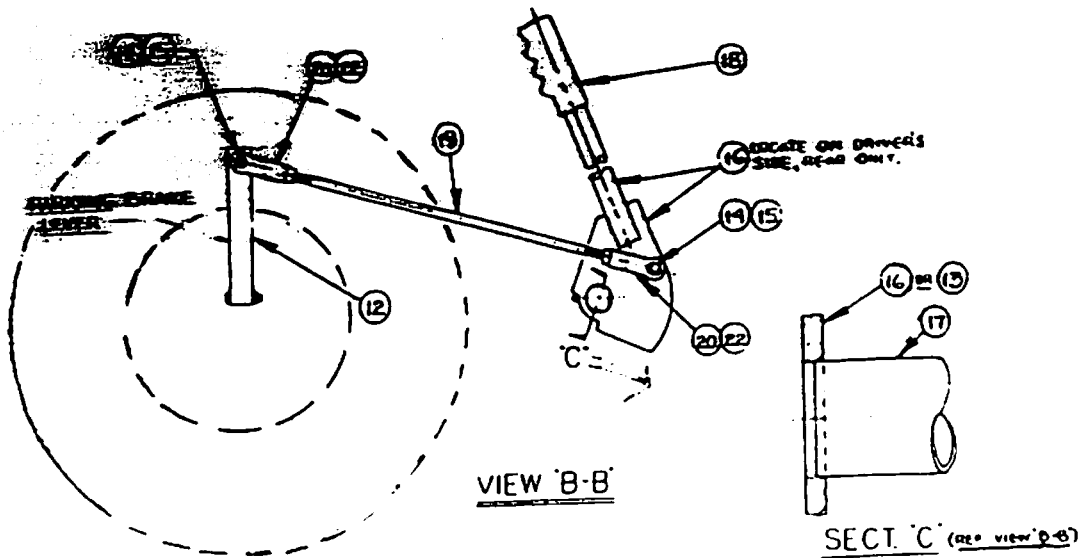
SECTION 5.2.3

CONFIDENTIAL-PROPRIETARY INFORMATION
REPRODUCTION OF THESE DRAWINGS OR THE MANUFACTURING OF PRODUCTS FROM THESE
DRAWINGS FOR USE BY ANYONE OTHER THAN SPOKANE INDUSTRIES INC. OF SPOKANE, WA
IS STRICTLY PROHIBITED WITHOUT WRITTEN CONSENT



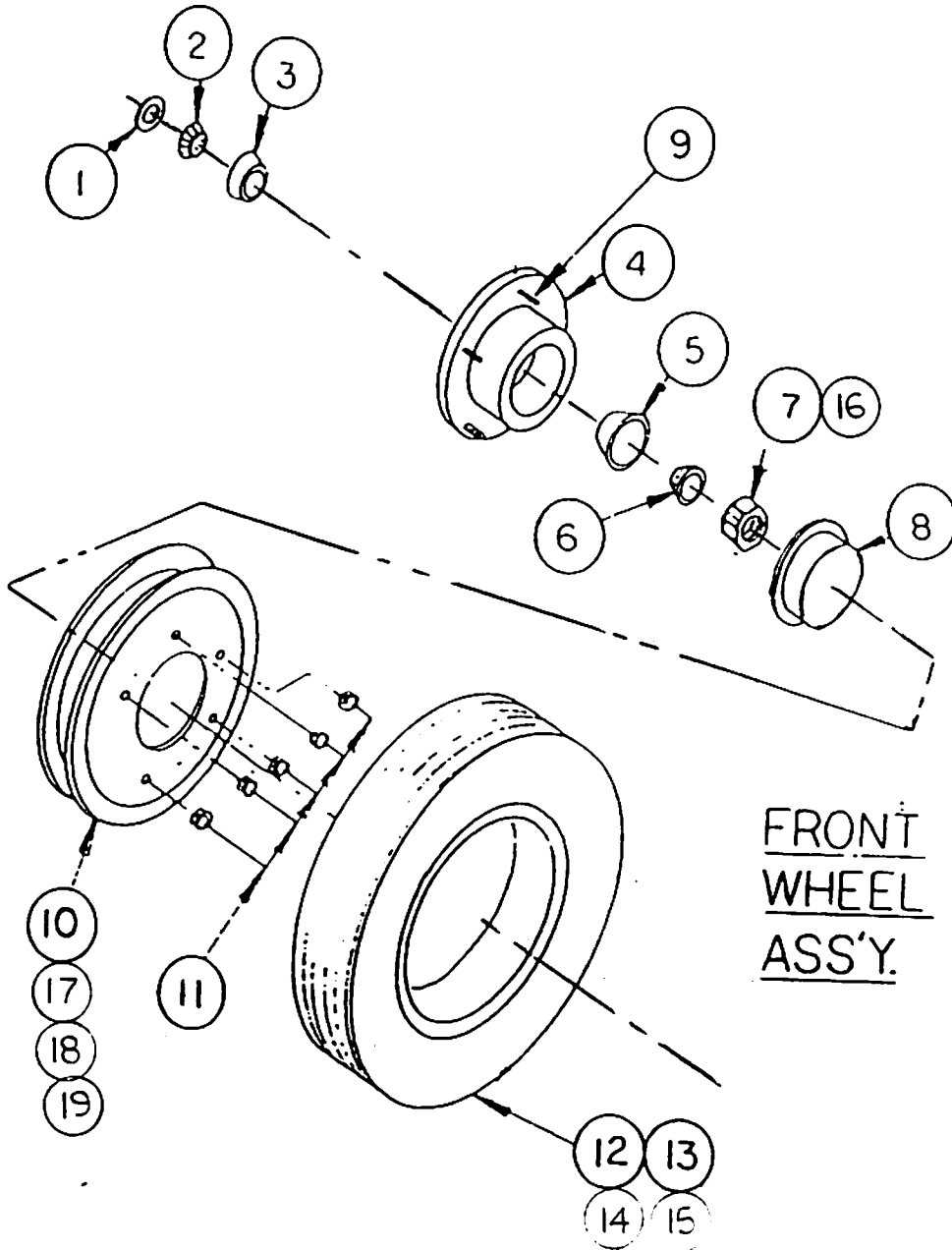
REAR VIEW

4/75



ITEM NO.	PART NO.	CAGE CODE	DESCRIPTION	QTY PER ASSY	USEABLE ON CODE	SMR CODE
0	08-1008	66144	BRAKE, LINKAGE .	1		PAFZZN
13	05-1025	66144	CAM, BRAKE LINKAGE	1		PAFZZN
14	02-10012	66144	BOLT	1		PAFZZN
15	02-12021	66144	NUT	1		PAFZZN
16	07-1033	66144	BRAKE HANDLE	1		PAFZZN
17	01-8104	66144	HANDLE CONNECTOR	1		PAFZZN
18	04-1055	66144	GRIP	1		PAFZZN
19	05-1026	66144	ROD, LINKAGE	1		PAFZZN
20	04-2516	66144	YOKE ENDS	4		PAFZZN
21	03-1020	66144	GREASE FITTING	2		PAFZZN
22	02-100231	66144	JAM NUTS	4		PAFZZN

SECTION 5.2.4.

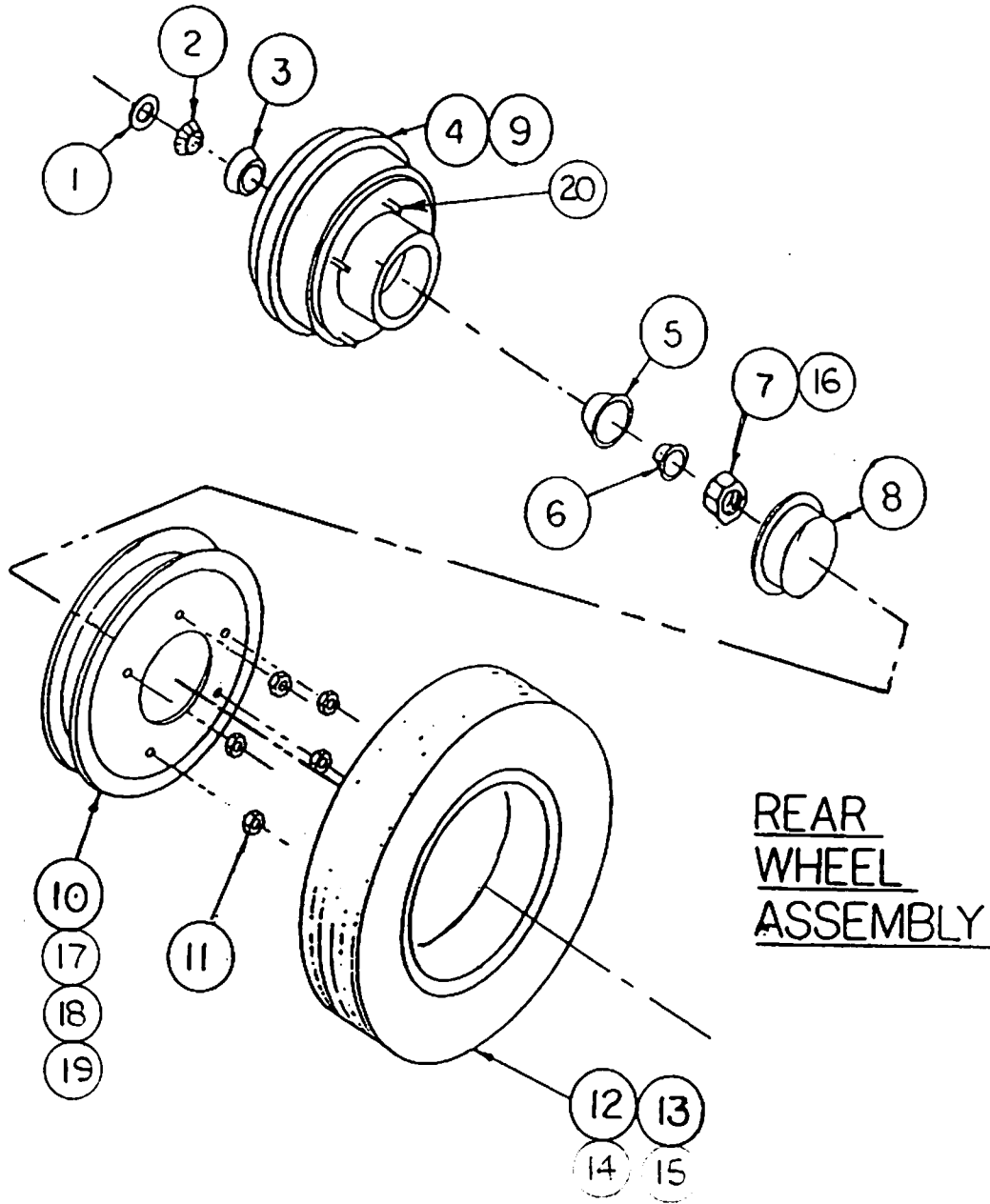


FRONT U-CARRIAGE

ITEM NO.	PART NO.	CAGE CODE	DESCRIPTION	QTY. PER ASSY.	USEABLE ON CODE	SMR CODE
0						
1	04-1012	66144SEAL	2		PAFZZN
2	017271	1FP59CONE AND ROLLERS	2		PAFZZN
3	L68111	60038CUP,TAPERED ROLLER	2		PAFZZN
4	04-1017	66144HUB, FRONT	2		XB
5	L44610	60038CUP,TAPERED ROLLER	2		PAFZZN
6	L44649	61220CONE AND ROLLERS,TA	2		PAFZZN
7	1"-UNF,C/S ZINC	57454NUT,SPINDLE	2		PAFZZN
8	04-1019	66144CAP,DUST	2		PAFZZN
9	02-1017	66144STUD	10		PAFZZN
10	04-10202	66144RIM	2		XB
11	04-1021	66144	...NUTS,LUG	10		PAFZZN
12	04-1020	66144TIRE	2		PAFZZN
13	04-10221	66144TUBE,TIRE	2		PAFZZN
14	8500TV	53477VALVE CHECK	2		PAFZZN
15	660V	27783CAP,PNEUMATIC VALVE	2		PAFZZN
16	02-1303	66144PIN,COTTER	2		PAFZZN
17	1/2-UNFX1",C/S	57454BOLT,RIM,1/2"-UNF	20		PAFZZN
18	1/2UNFX1",C/S	57454BOLT,RIM 1/2"-UNF	20		PAFZZN
19	1/2" LOCK,C/SZ1	57454WASHER,LOCK,1/2"	20		PAFZZN

CONFIDENTIAL PROPRIETARY INFORMATION
Reproduction of this data or the manufacturing of products from
this data by anyone other than Spokane Metal Products of
Spokane WA is strictly prohibited without written consent

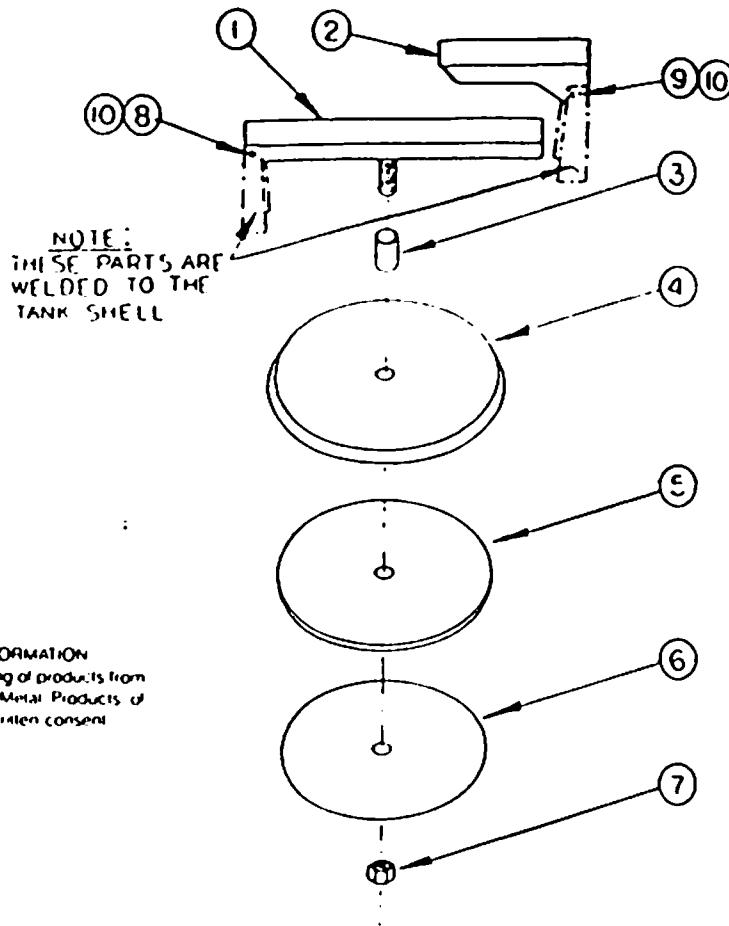
SECTION 5,2,5.



REAR
WHEEL
ASSEMBLY

REAR U-CARRIAGE

ITEM NO.	PART NO.	CAGE CODE	DESCRIPTION	QTY. PER ASSY.	USEABLE ON CODE	SMR CODE
0						
1	04-1012	66144SEAL	2		PAFZZN
2	017271	1FP59CONE AND ROLLERS,TA	2		PAFZZN
3	L68111	60038CUP,TAPERED ROLLER	2		PAFZZN
4	05-1020	66144HUB,REAR	2		XB
5	L44610	60038CUP,TAPERED ROLLER	2		PAFZZN
6	L44649	61220CONE AND ROLLERS,TA	2		PAFZZN
7	1"UNF,C/S ZINC	57454NUT,SPINDLE	2		PAFZZN
8	04-1019	66144CAP,DUST	2		PAFZZN
9	05-1021	66144DRUM,BRAKE,REAR	2		XB
10	04-10202	66144RIM	2		XB
11	04-1021	66144NUTS,LUG	10		PAFZZN
12	04-1020	66144TIRE	2		PAFZZN
13	04-10221	66144TUBE,TIRE	2		PAFZZN
14	8500TV	53477VALVE CHECK	2		PAFZZN
15	660V	27783CAP,PNEUMATIC VALVE	2		PAFZZN
16	02-1303	66144PIN,COTTER	2		PAFZZN
17	1/2-UNFX1",C/S	57454BOLT,RIM,1/2"-UNF	20		PAFZZN
18	1/2-UNFX1",C/S	57454BOLT,RIM,1/2"-UNF	20		PAFZZN
19	1/2"LOCK,C/S Z1	57454WASHER,LOCK,1/2"	20		PAFZZN
20	02-1017	66144STUD	10		PAFZZN



CONFIDENTIAL PROPRIETARY INFORMATION
 Reproduction of this data or the manufacturing of products from
 this data by anyone other than Spokane Metal Products of
 Spokane, WA is strictly prohibited without written consent

SECTION 5,3

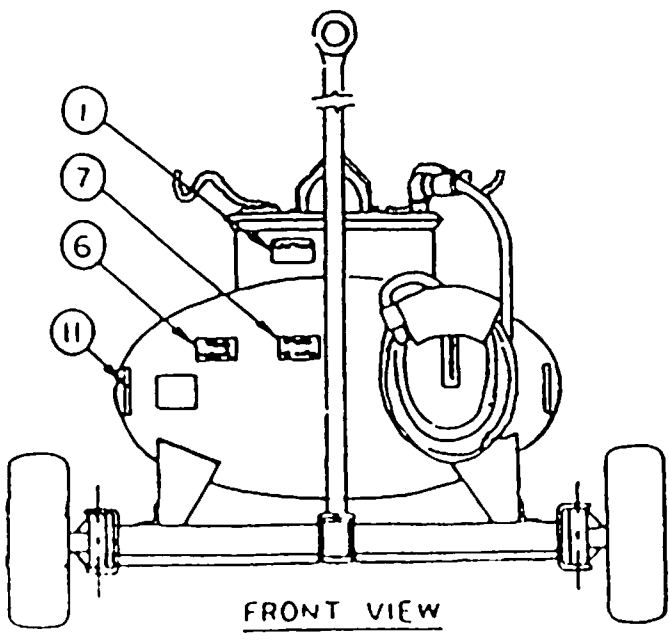
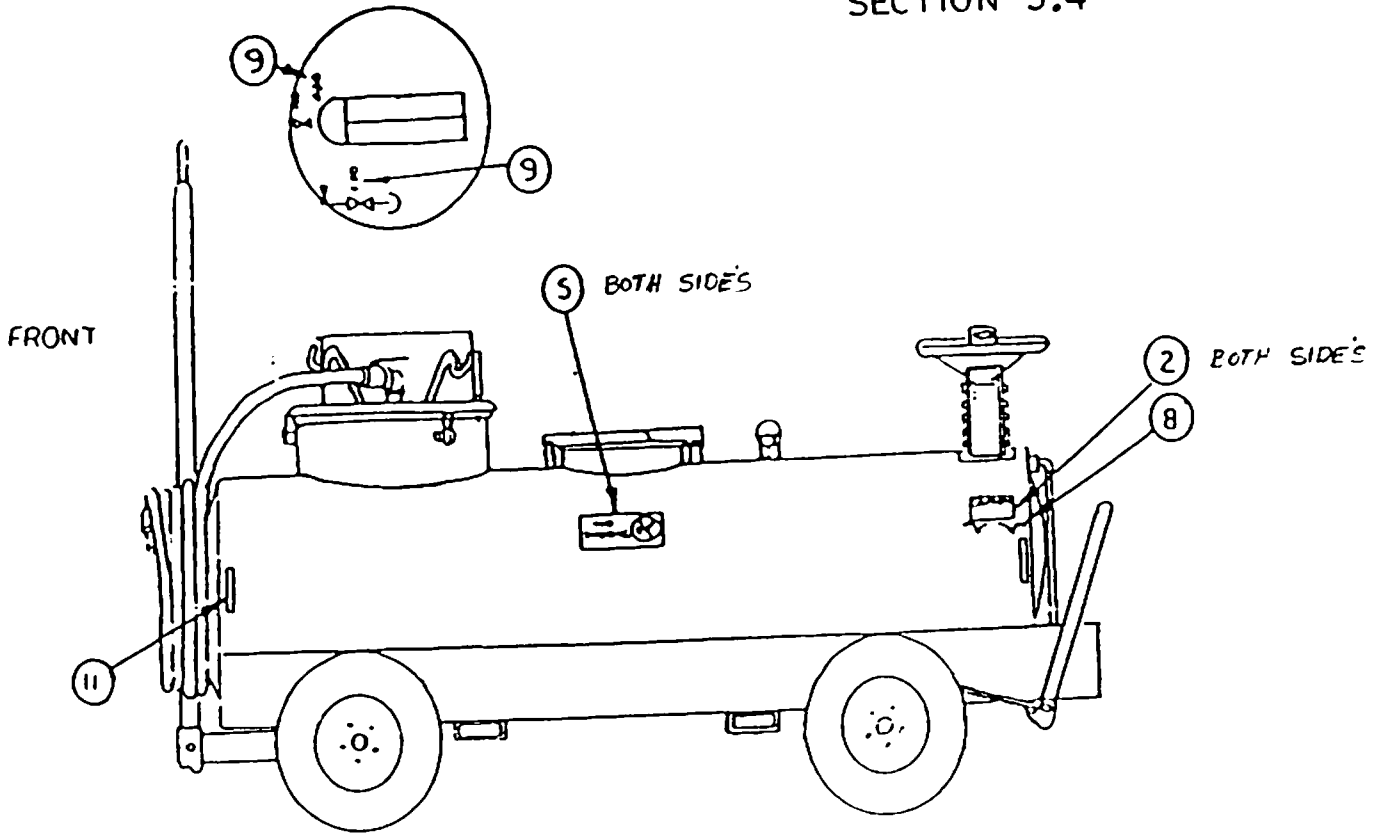
ASSEMBLY NO. 08-1025

MAJOR ASSEMBLY - MANWAY ASSEMBLY

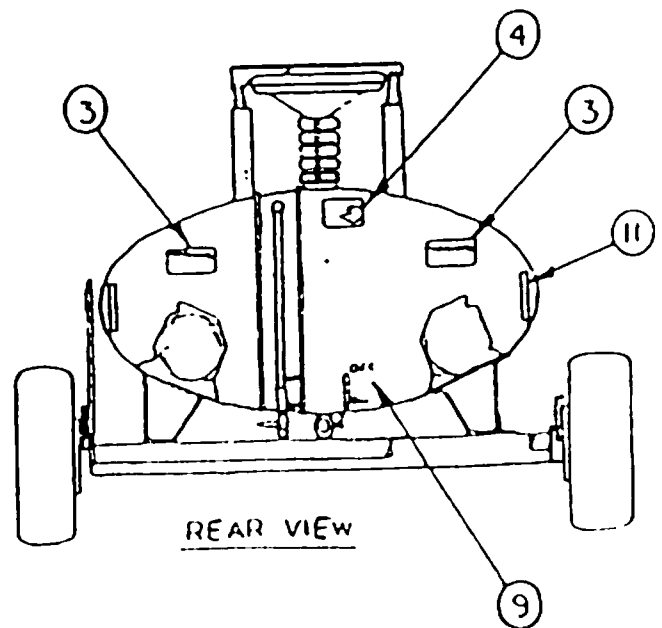
ITEM NO.	PART NO.	CAGE CODE	DESCRIPTION	QTY. PER ASSY.	USEABLE ON CODE	SMR CODE
0	08-1025	66144	..COVER,MANWAY ASSY.	1		XB
1	07-1039S	66144	...CROSSARM,19 1/2"	2		PAFZZN
2	01-8222S	66144	..CROSSARM,7"	2		PAFZZN
3						
4	01-86001	66144	...COVER,17"	2		XB
5	06-2502S	66144	...GASKET,MANWAY	1		PAFZZN
6	07-2303	66144	...RETAINER,GASKET,MAN	1		XB
7	MS51922	96906	...NUT,5/8-UNF,NYLOC	2		PAFZZN
8	3/8-UNCX3",18	1N109	...BOLT,3/8-UNCX3	2		PAFZZN
9	3/8-UNCX3 1/2"	1N109	...BOLT,3/8-UNCX3 1/2	2		PAFZZN
10	MS51922	96906	...NUT,3/8-UNC,NYLOC	4		PAFZZN

CONFIDENTIAL PROPRIETARY INFORMATION
Reproduction of the date or the manufacturing of products from
this data by anyone other than Spokane Metal Products of
Spokane, WA is strictly prohibited without written consent

SECTION 5.4



FRONT VIEW

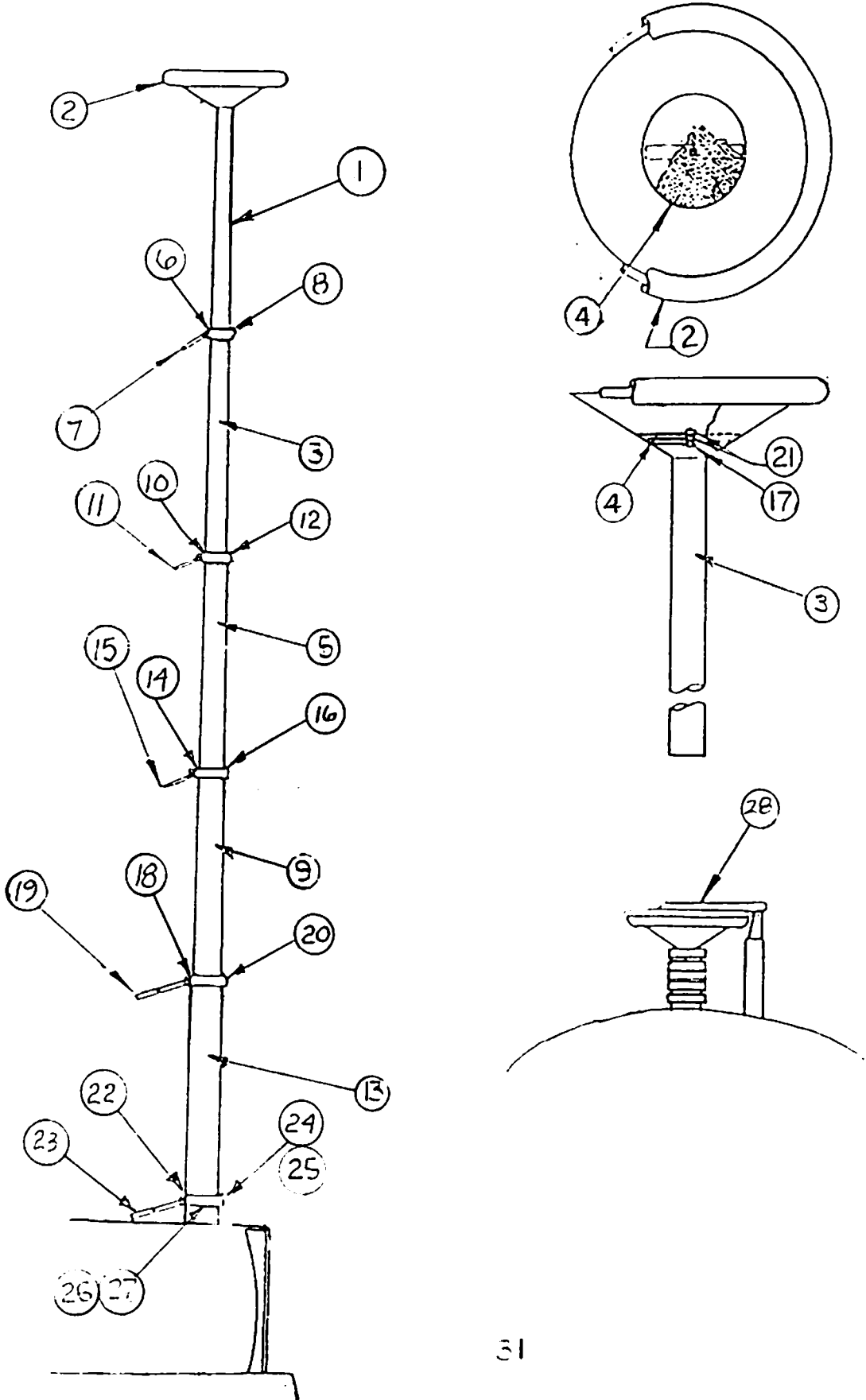


REAR VIEW

ASSEMBLY NO 10-100070
 MAJOR ASSEMBLY - DECAL PACKAGE

ITEM NO.	PART NO.	CAGE CODE	DESCRIPTION	QTY. PER ASSY.	USEABLE ON CODE	SMR CODE
0	10-100070	66144	..MARKER, IDENTIFI	1		PAFFFFP
1	06-1002	66144	...DECAL	1		MFF
2	06-1003	66144	...DECAL, CAUTION, BRAKE	1		MFF
3	06-1004	66144	...MARKER, IDENTIFI	1		MFF
4	08-1005	66144	...DECAL(- OPTIONAL T.D. UNITS)	1		MFF
5	06-1006	66144	...DECAL, NO-SMOKING	2		MFF
6	06-1007	66144	...MARKER, IDENTIFI	1		MFF
7	08-1008	66144	...DECAL	1		MFF
8	06-1009	66144	...DECAL, ON/OFF BRAKE	1		MFF
9	06-1011	66144	...MARKER, IDENTIFI	2		MFF
10	06-1020U	66144	...DECAL (NOT SHOWN)	2		MFF

SECTION 5.5



ASSEMBLY 08-1034U
MAJOR ASSEMBLY - TELESCOPING DRAIN ASSEMBLY

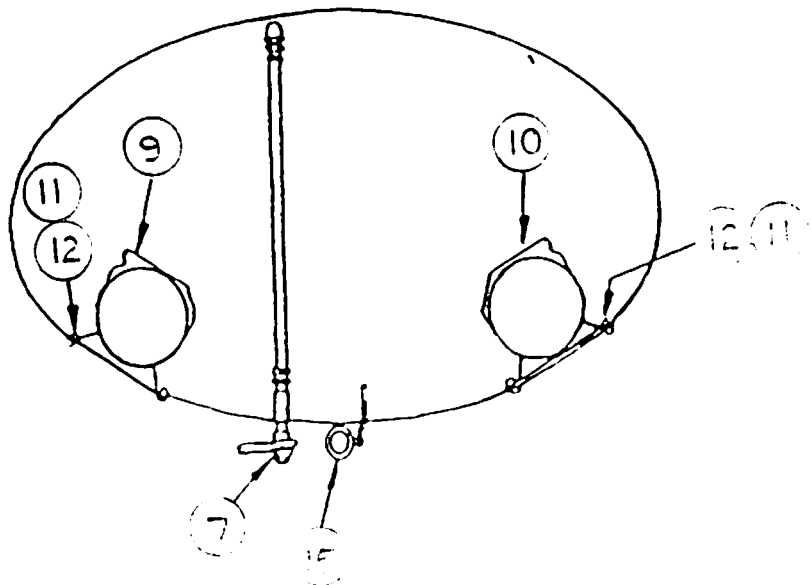
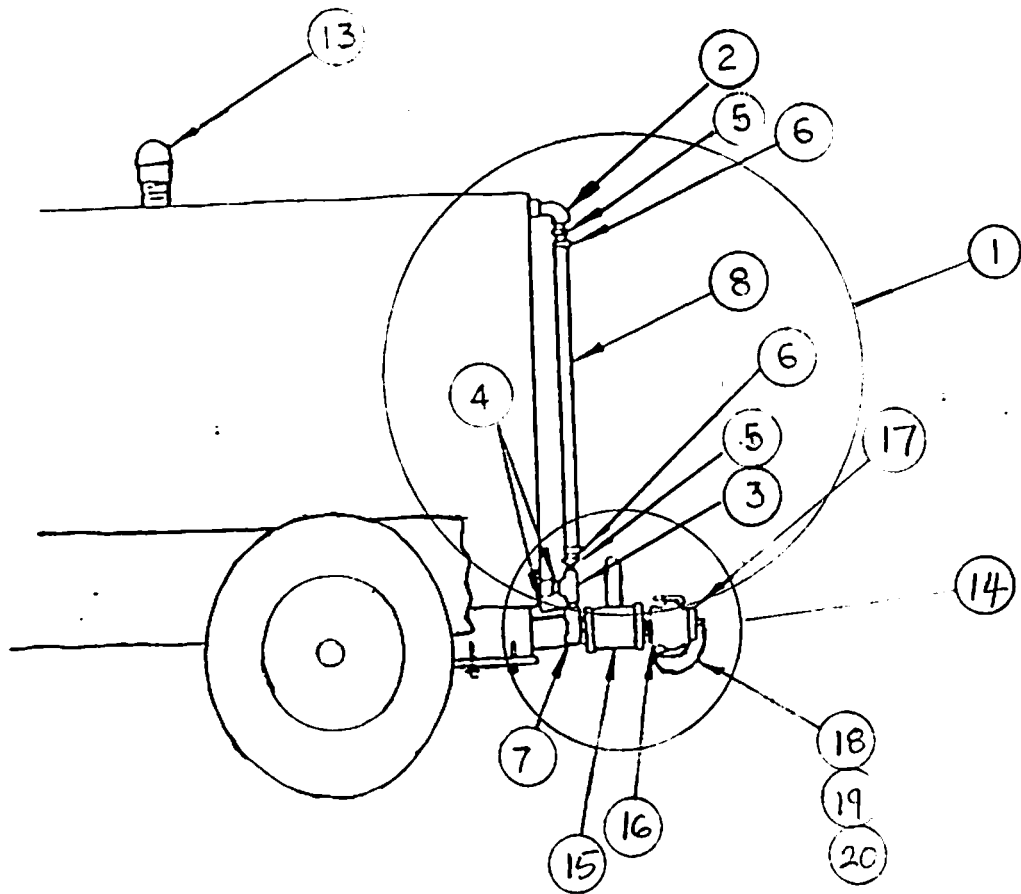
ITEM NO.	PART NO.	CAGE CODE	DESCRIPTION	QTY. PER ASSY.	USEABLE ON CODE	SMR CODE
0	08-1034U	66144	.DRAIN, TELESCOPING	1		AFF
1	07-10541	66144	..FUNNEL, DRAIN	1		PAFFFFP
2	06-1022T	66144	...SEAL, LID, FUNNEL	2		PAFZZN
3	08-1017U	66144	..CLAMP, 2" DRAIN	1		XB
4	04-1039	66144	...SCREEN, DRAIN	2		XB
5	08-1027U	66144	..CLAMP, 2 1/2", DRAIN	1		XB
6	05-10011	66144	...WEDGE, CLAMP, 2"	1		PAFZZN
7	05-10181	66144	...HANDLE, CLAMP, DRAIN	5		PAFZZN
8	02-1005	66144	...SCREW, SET, WEDGES	5		PAFZZN
9	08-1028U	66144	..CLAMP, 3" DRAIN	1		XB
10	05-10021	66144	...WEDGE, CLAMP, 2 1/2"	1		PAFZZN
11	05-10181	66144	...HANDLE, CLAMP, DRAIN	5		PAFZZN
12	02-1005	66144	...SCREW, SET, WEDGES	5		PAFZZN
13	07-1014U	66144	..TUBE ASSEMBLY, METAL	1		PAFZZN
14	05-10031	66144	...WEDGE, CLAMP, 3"	1		PAFZZN
15	05-10181	66144	...HANDLE, CLAMP, DRAIN	5		PAFZZN
16	02-1005	66144	...SCREW, SET, WEDGES	5		PAFZZN
17	1/4-UNCX1,18-8	1N109	...BOLT, CARRIAGE, 1/4"	2		PAFZZN
18	05-10041	66144	...WEDGE, CLAMP, 3 1/2"	1		PAFZZN
19	05-10181	66144	...HANDLE, CLAMP, DRAIN	1		PAFZZN
20	02-1005	66144	...SCREW SET WEDGES	1		PAFZZN
21	NUT,1/4"-UNC 18	1N109	...NUT, 1/4"-UNC NYLON	11		PAFZZN
22	05-10051	66144	...WEDGE, CLAMP, BASE, 4"	1		PAFZZN
23	05-10181	66144	...HANDLE, CLAMP	5		PAFZZN
24	05-10302	66144	..CLAMP, BASE, 4"	1		XB
25	02-1005	66144	..SCREW, SET	5		PAFZZN
26	MS35338	96908	...WASHER, LOCK, 1/4"	7		PAFZZN
27	1/4-UNCX3/4,18	1N109	...BOLT, 1/4"-UNC X 3/4"	4		PAFZZN
28	08-1026A	66144	...COVER ASSEMBLY	1		PAFZZN

ASSEMBLY NO. 08-0001U (CONTINUED)
VACUUM SYSTEM ASSEMBLY

Item No.	Part No.	Cage code	Description 1234	Qty per Assy	Usable on code	SMR code
0	08-0001U	66144	.Vacuum Pot, Assy.	1		XB
1	07-1000	66144	...Arm, Drain	1		XB
2	04-1000	66144	...Gasket, Drain	1		PAFZZN
3	5/16-UNCx6	1N109	...Bolt,5/16-UNC x 6	1		PAFZZN
4	1/4UNCx1.25	1N109	...Bolt,1/4-UNC x 1.25	1		PAFZZN
5	90313A106	3A054	...Washer,Flat	1		PAFZZN
6	79NTE058	72963	...Nut, Self locking	1		PAFZZN
7	07-1001	66144	...Arm,Float,Overflow	1		XB
8	04-1001	66144	...Gasket,Overflow	1		PAFZZN
9	1/4UNCx1.25	1N109	...Bolt,1/4UNCx1.25	1		PAFZZN
10	MS51922-2	96906	...Nut,1/4 Nylock	2		PAFZZN
11	S8157N9303259364		...Washer, Flat	1		PAFZZN
12	08-1000	66144	..Stop, Drain	1		XB
13	06-1022V	66144	..Gasket,Pot,Vacuum	1		PAFZZN
14	04-1004	66144	...Housing, Exhaust	1		XB
15	04-1005	66144	...Pneumatic Muffler	1		PAFZZN
16	04-1006	66144	...Venturi	1		XB
17	04-1007	66144	...Jet,Air,Venturi	1		XB
18	04-1008	66144	...Box,Venturi	1		XB
19	07-003-27	57661	...Valve,Ball	1		PAFZZN
20	STYLEAKMPT	72661	...Coupling Half,Quick	1		PAFZZN
21	04-1010	66144	...Gasket,Venturi	1		PAFZZN
22	1/4UNFx3/4	57454	...Bolt,1/4UNFx3/4	3		PAFZZN
23	MS35333-40	96906	...Washer,Lock	3		PAFZZN
24	03-1021	66144	...Elbow,90,1-1/2-NPT	1		PAFZZN
25	03-02922S	66144	...Nipple,Close, 1-1/2"	1		PAFZZN
26	70-107-27	57661	...Valve, Ball	1		PAFZZN
27	03-1002	66144	...Bushing,Hex	1		XB
28	AST-15,1.25	76621	...Nipple,King,1-1/4	1		PAFZZN
29	03-10101	66144	...Clamp,Hose	1		PAFZZN
30	06-10161	66144	...Hose,Nonmetallic	1		PAFZZN
31	03-1021	66144	...Cap,Pipe	4		PAFFZN
32	08-1002	66144	..Lid,Pot,Vacuum	1		PAFZZN
33	07-1034U	66144	..Cover,Generator,Vac	1		XB
34	1/4UNCx5/8	1N109	...Bolt,1/4UNCx5/8	6		PAFZZN
35	1/4Flat18/81	1N109	...Washer,Flat,1/4	6		PAFZZN
36	08-1001	66144	..Stop,Valve	1		PAFFFF
37	MS51922-2	96906	...Nut,1/4UNC Nylock	6		PAFZZN
38	AM-2	72661	...Coupling Half,Quick	1		PAFZZN
39	5/16UNCx6	1N109	...Bolt,5/16UNCx6 ss	1		PAFZZN
40	79NTE058	72962	...Nut,5/16UNC,Nylock	1		PAFZZN
41	9775K12	39428	...Float,Valve	1		PAFZZN
42	08-1003	66144	..Head,Vacuum Assy.	1		PAFFFF
43	03-11135	66144	...Reducer,Air Jet	1		XB
44	1/4UNC,NYLK	1N109	...Nut,1/4UNC,Nylock	1		PAFZZN
45	07-10341	66144	..Valve,Check	1		PAFZZN
46	04-1062	66144	...Latch Lid Vacuum	3		PAFZZN
47	SSD64SSBS	07707	...Rivit,Nail	18		PAFZZN
48	9688K22	3A045	...Plug,Button,Nylon	4		PAFZZN

CONFIDENTIAL PROPRIETARY INFORMATION
Reproduction of this data or the manufacturing of products from
this data by anyone other than Spokane Metal Products of
Spokane WA is strictly prohibited without written consent

SECTION 5.7



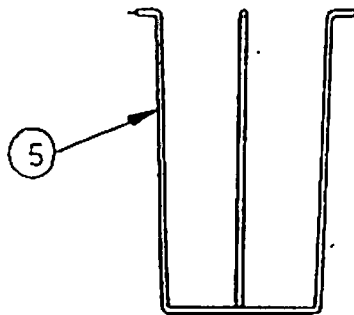
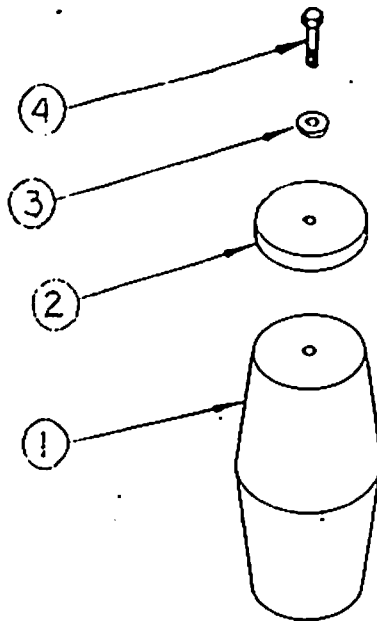
REAR VIEW

MISC. FIXTURES

ITEM NO.	PART NO.	CAGE CODE	DESCRIPTION	QTY PER ASSY	USEABLE ON CODE	SMR CODE
0						
1	08-1014	66144	INDICATOR, SIGHT LIQ	1		XB
2	03-0017S	66144	ELBOW, TUBE	1		PAFZZN
3	03-1007	66144	TEE	1		PAFZZN
4	03-1008	66144	NIPPLE, HOSE	2		PAFZZN
5	03-11130	66144	COUPLING HOSE	2		PAFZZN
6	03-1010	66144	CLAMP, HOSE, 3/4"	2		PAFZZN
7	70-103-27	66144	VALVE, BALL, APOLLO	1		PAFZZN
8	06-2527	66144	TUBING, NONMETALLIC	1		PAFZZN
9	2930-43	66144	REEL, GROUNDING	1		PAFZZN
10	CS-4930SV-0712	16236	REEL, STATIC	1		PAFZZN
11	1/2-UNCX1,18-8	1N109	BOLT, 1/2-UNC X 1	4		PAFZZN
12	MS51922-33	96906	NUT, SELF-LOCKING, HE	4		PAFZZN
13	04-1037	66144	VENT, 1-1/2"	1		XB
14	08-1012	66144	DRAIN ASSY	1		PAFFFF
15	70-107-27	57661	VALVE, BALL, APOLLO	1		PAFZZN
16	15-B	33813	CAMLOCK. 1-1/2"	1		PAFZZN
17	12-W	33813	PLUG, CAMLOCK, 1-1/2"	1		PAFZZN
18	089-3524	96508	CHAIN, SAFETY	1		XB
19	04-1035	66144	HOOK, S	1		XB
20	04-10351	66144	HOOK, S	1		XB

CONFIDENTIAL PROPRIETARY INFORMATION
 Reproduction of this data or the manufacturing of products from
 this data by anyone other than Spokane Metal Products of
 Spokane WA is strictly prohibited without written consent

SECTION 5,8



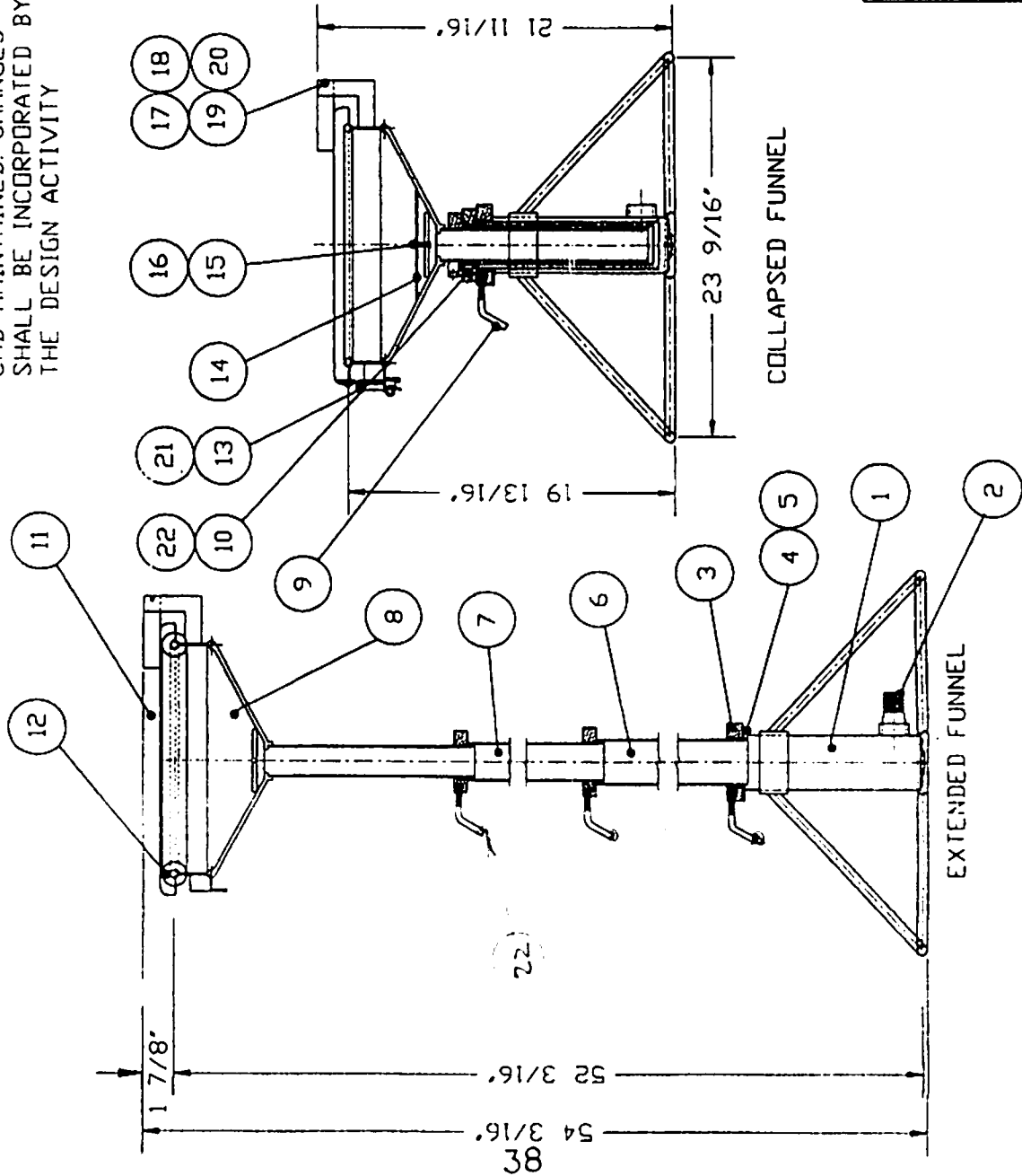
ASSEMBLY NO. 08-10011

MAJOR ASSEMBLY - VENT, OVERFLOW PREVENTOR

ITEM NO.	PART NO.	CAGE CODE	DESCRIPTION	QTY. PER ASSY.	USEABLE ON CODE	SMR CODE
0	08-10011	66144	..VENT, OVERFLOW, ASSY	1		AFF
1	9775K21	39428FLOAT, VALVE	1		PAFZZN
2	04-1047	66144GASKET	1		PAFZZN
3	1/4,18-8STAINLE	1N109WASHER, FLAT, 1/4"	9		PAFZZN
4	1/4-UNCX 1 1/2	1N109BOLT, 1/4-UNC, 1 1/2"	1		PAFZZN
5	08-1023	66144	...CAGE, VENT OVERFLOW	1		XB

SECTION 5.9

CAD MAINTAINED. CHANGES SHALL BE INCORPORATED BY THE DESIGN ACTIVITY



NO.	PART NO.	DESCRIPTION	QTY.
21	CCP64	RIVET, NAIL	4
20	01-8407	SPACER, HINGE	1
19	02-1100	WASHER, FLAT, 1/4"	2
18	01-8406	PIN, HINGE	1
17	02-1200	NUT, 1/4-UNC, NYLOC	2
16	02-10001	BOLT, CARRIAGE, 1/4"	1
15	02-1200	NUT, 1/4-UNC, NYLOC	1
14	04-1039	STRAINER, FUNNEL	1
13	04-1053	LATCH, PULL DOWN	1
12	06-1022T	SEAL, LID, FUNNEL	1
11	07-11107	COVER, FUNNEL	1
10	05-0037	WEDGE, CLAMP	3
9	05-10181	HANDLE, CLAMP	3
8	07-11106	STEM, FUNNEL SECTION	1
7	07-11105	STEM, UPPER, FUNNEL	1
6	07-11104	STEM, LOWER, FUNNEL	1
5	02-11001	WASHER, LOCK, 1/4"	4
4	02-10010	BOLT, 1/4-UNC X 5/8"	4
3	05-10012	CLAMP, FUNNEL BASE	1
2	AST-15	NIPPLE, KING, ALUM.	1
1	07-11103	BASE SECTION, FUNNEL	1
	07-11100	DRAIN, REMOTE, FUNNEL	1

MATERIAL LIST

SPOKANE METAL PRODUCTS
 P.O. BOX 3303, SPOKANE WA 99220 (509) 928 0720

TITLE: DRAIN, REMOTE, FUNNEL		CAGE CODE #:	DWG. NO.:
NAME	TTSJ	SIZE:	66144
DATE	93-03-01	B	07-1110U
CHECK		SCALE:	1/8 SHT 1 OF 1

REPRODUCTION OF THESE DRAWINGS OR THE MANUFACTURING OF PRODUCTS FROM THESE DRAWINGS FOR USE BY ANYONE OTHER THAN SPOKANE METAL PRODUCTS IS STRICTLY PROHIBITED WITHOUT WRITTEN CONSENT.

Item No.	Part No.	Cage Code	Description 1234	Qty per Assy	Usable on code	SMR code
0	07-111OU	66144	.Drain,Remote,Funnel	1		PAFFFP
1	07-11103	66144	..Base Section,Funnel	1		XB
2	AST-15	72661	...Adapter,Straight,Pi	1		PAFZZN
3	05-10012	66144	...Clamp,Funnel Base	1		PAFZZN
4	1/4-UNC x 5/8,18	1N109	...Bolt,1/4-UNC x 5/8"	3		PAFZZN
5	MS35338-139	96906	...Washer,Lock	3		PAFZZN
6	07-11104	66144	..Stem,Lower,Funnel	1		PAFZZN
7	07-11105	66144	..Stem,Upper,Funnel	1		PAFZZN
8	07-11106	66144	..Stem Funnel Section	1		PAFZZN
9	05-10182	66144Handle,Clamp	3		PAFZZN
10	05-0037	66144Wedge,Clamp	3		PAFZZN
11	07-11107	66144	...Cover,Funnel	1		XB
12	06-1022T	66144	...Seal,Lid,Funnel	1		PAFZZN
13	04-1053	66144Latch,Pull Down	1		XB
14	04-1039	66144	...Strainer,Funnel	1		PAFZZN
15	MS51922-2	96906Nut,Self-Locking,He	1		PAFZZN
16	1/4 x 1 UNC,18-8	1N109Bolt,Carriage	1		PAFZZN
17	1/4 UNC,18-8 STA	1N109Nut,1/4"-UNC,Nyloc	2		PAFZZN
18	01-8407	66144Pin,Hinge	1		PAFZZN
19	1/4,18-8 Stainle	1N109Washer,Flat,1/4"	2		PAFZZN
20	01-8406	66144Spacer,Hinge	1		XB
21	SSD64SSBS	07707Rivet,Blind	4		PAFZZN
22	9753K42	3A054Cap,Handle	3		XB

SPOKANE METAL PRODUCTS

Spokane Washington

400 GALLON BOWSER FUEL DRAIN TANK

ONE YEAR LIMITED WARRANTY

Seller warrants its 400 gallon Bowser Fuel Drain Tank to be free from defects in material and workmanship under the normal use and service for which the unit is intended if, but only if the unit has been properly operated, maintained and stored. Our obligation under this Warranty shall be limited to the repair or exchange of equipment and parts which may prove defective within one year from the date the unit is shipped from our plant. All transportation charges on parts returned to us for replacement under this Warranty must be returned prepaid.

This Warranty does not extend to damage caused by environmental factors varying from normal design conditions, whether natural or manmade, or to units subjected to misuse, negligence or accident. This Warranty likewise does not extend to the unit or any parts thereof which have been repaired or altered improperly or in any way so as the effect adversely it stability or reliability. This Warranty does not cover parts or labor required to repair or replace parts whose usefulness is exhausted due to normal operation of the unit.

THIS WARRANTY IS EXPRESSLY IN LIEU OF ALL OTHER WARRANTIES, EXPRESS OR IMPLIED, INCLUDING ANY IMPLIED WARRANTY OF MERCHANTABILITY OR FITNESS FOR A PARTICULAR PURPOSE NOT SET FORTH IN A WRITING SIGNED BY AN AUTHORIZED REPRESENTATIVE OF SELLER. SELLER SHALL IN NO EVENT BE LIABLE FOR ANY CONSEQUENTIAL LOSS OR DAMAGE RESULTING FROM THE USE OF THE UNIT.